



St. Johns County 2024



1

Growth &
Infrastructure

2

Financial
Stewardship

3

Open
Governance &
Transparency

4

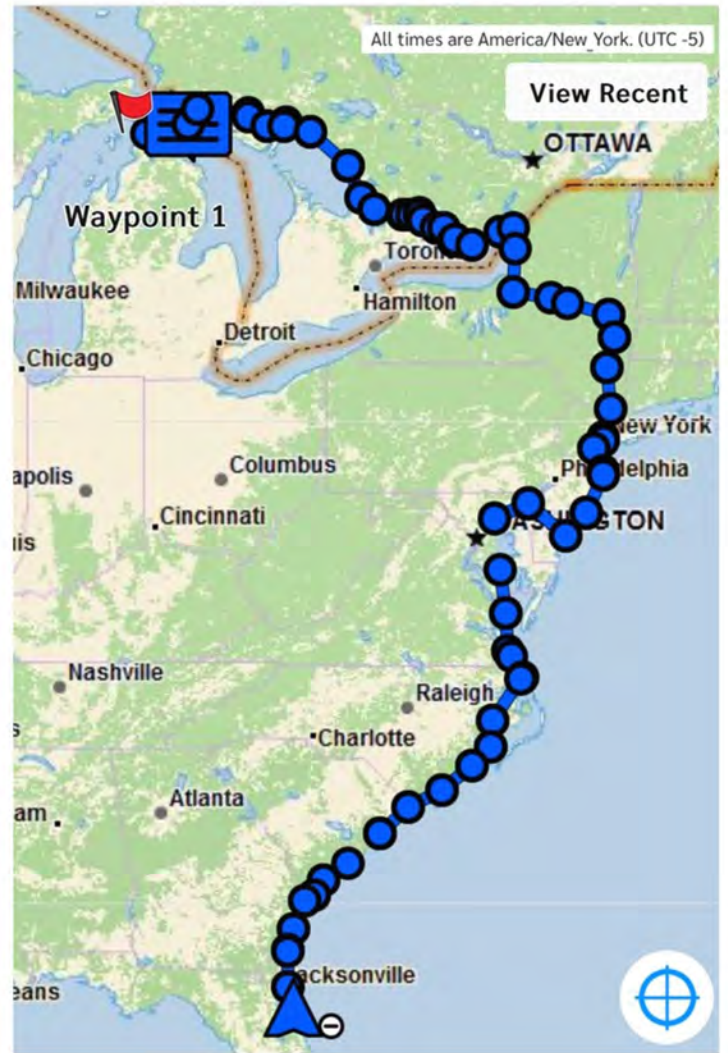
Economic
Resiliency



Map

Message

Locate



An aerial photograph of a coastal region, likely a delta or estuary, showing a complex network of waterways, roads, and agricultural fields. The water is dark blue, and the land is a mix of green and brown. The text "Growth & Infrastructure" is overlaid in white, bold font on the left side of the image.

Growth & Infrastructure

Evolve and Grow - with Adaptation and Vigor



117,341 acres conserved

31% of total conservation area in
unincorporated St. Johns County



Infrastructure - Roadway Projects in 2024

- ✓ CR 2209
- ✓ CR 210 West (Greenbriar to Cimarrone)
- ✓ CR 210 East
- ✓ Longleaf Pines Parkway
- ✓ Mickler Road & SR A1A
- ✓ Preservation Trail Signal
- ✓ Pavement Management
- ✓ Pine Island & US 1 Signal
- ✓ Racetrack Road Widening
- ✓ SR 16 & IGP Improvements
- ✓ Stratton Blvd Signal
- ✓ Woodlawn Road
- ✓ Kings Estate Road
- ✓ **\$298 million**

Infrastructure - Drainage Projects in 2024

- ✓ Winton Circle
- ✓ Kings Road
- ✓ Santa Rosa
- ✓ Holmes Blvd
- ✓ Countywide Underdrain
- ✓ North Rodriquez
- ✓ Porpoise Point
- ✓ San Julian
- ✓ Surfwood
- ✓ Kings Estate Road
- ✓ **\$49 million**

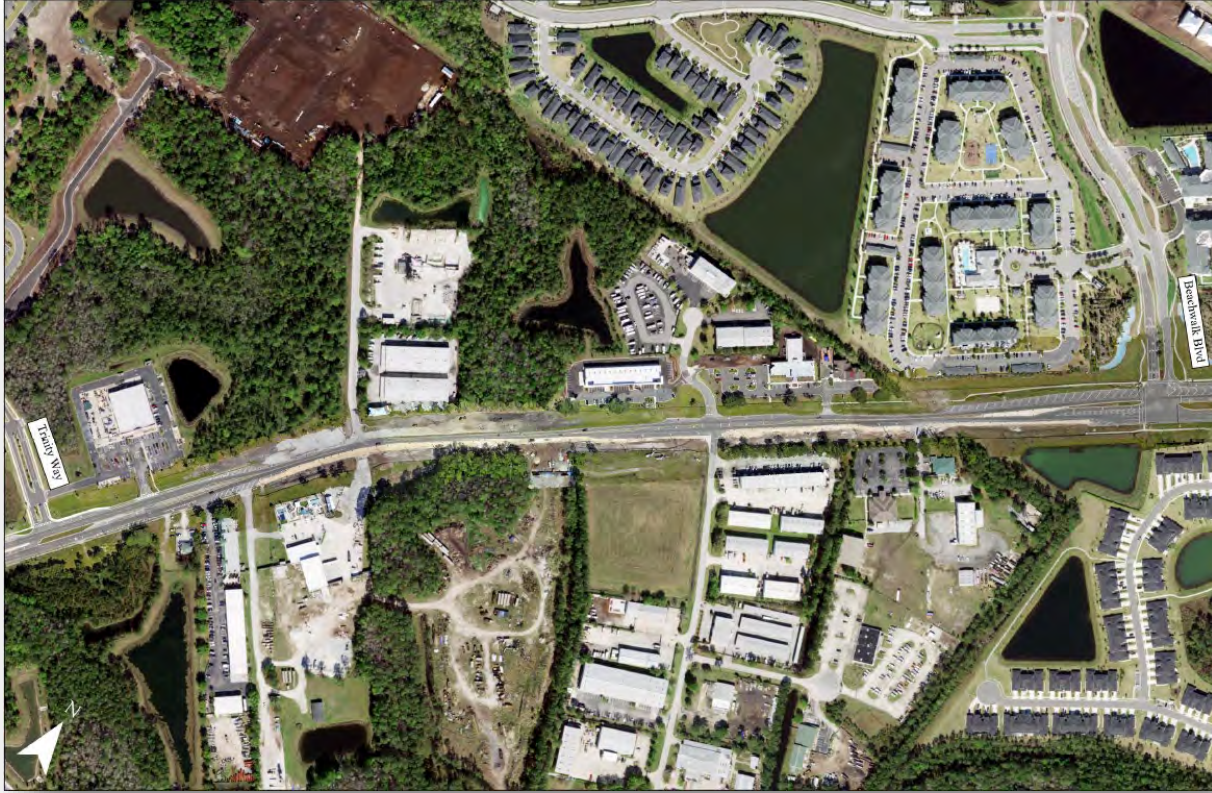
Infrastructure - Facilities Projects in 2024

- ✓ Water Utility Lab
- ✓ Fire Station and SJSO Substation #11
- ✓ Flagler Estates Community Center
- ✓ Emergency Operations Center Annex
- ✓ Fire Station #21
- ✓ Fire Station #22
- ✓ Hastings Community Center & Library
- ✓ Public Service Center
- ✓ Sheriff Fleet & Supply
- ✓ Tillman Ridge Tipping Floor for solid waste
- ✓ **\$68 million**

Infrastructure - Coastal Protection Projects in 2024

- ✓ Ponte Vedra Restoration FEMA Berm
- ✓ St. Augustine USACE Project
- ✓ The North Ponte Vedra project
- ✓ Ponte Vedra Beach Nourishment
- ✓ South Ponte Vedra and Vilano Beach USACE Coastal Storm Risk Management (CSRМ) Flood Control and Coastal Emergencies (FCCE) Project
- ✓ St. Augustine USACE Shore Protection Project (SPP) FCCE Project,
- ✓ FEMA Summer Haven Rock Revetment
- ✓ Porpoise Point Drive Armoring,
- ✓ Summer Haven Intracoastal Waterway (ICW) Dredge Disposal Project.
- ✓ **\$173 million**

Infrastructure - CR 210 East (Summer 2025)



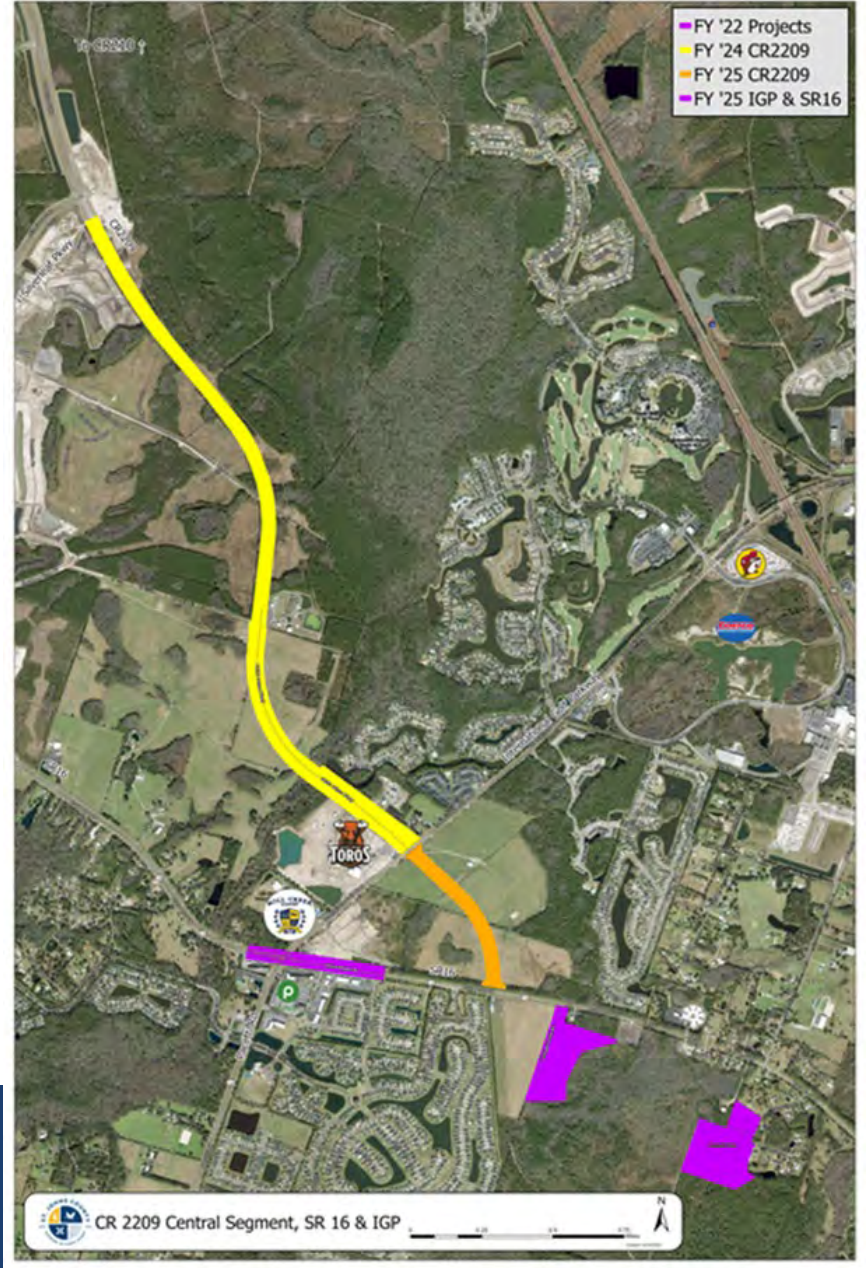
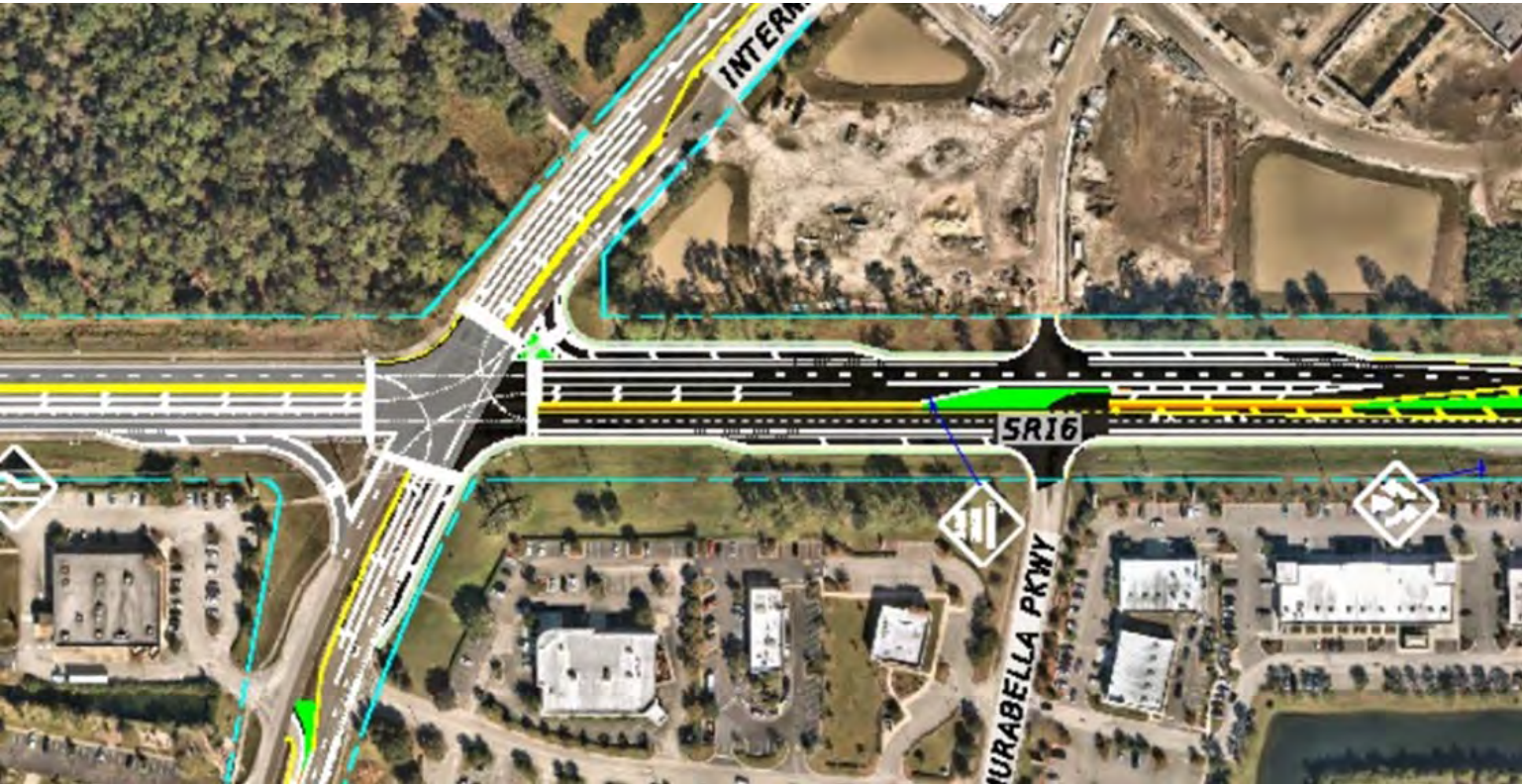
Infrastructure – CR 210 West (Sept 2025)

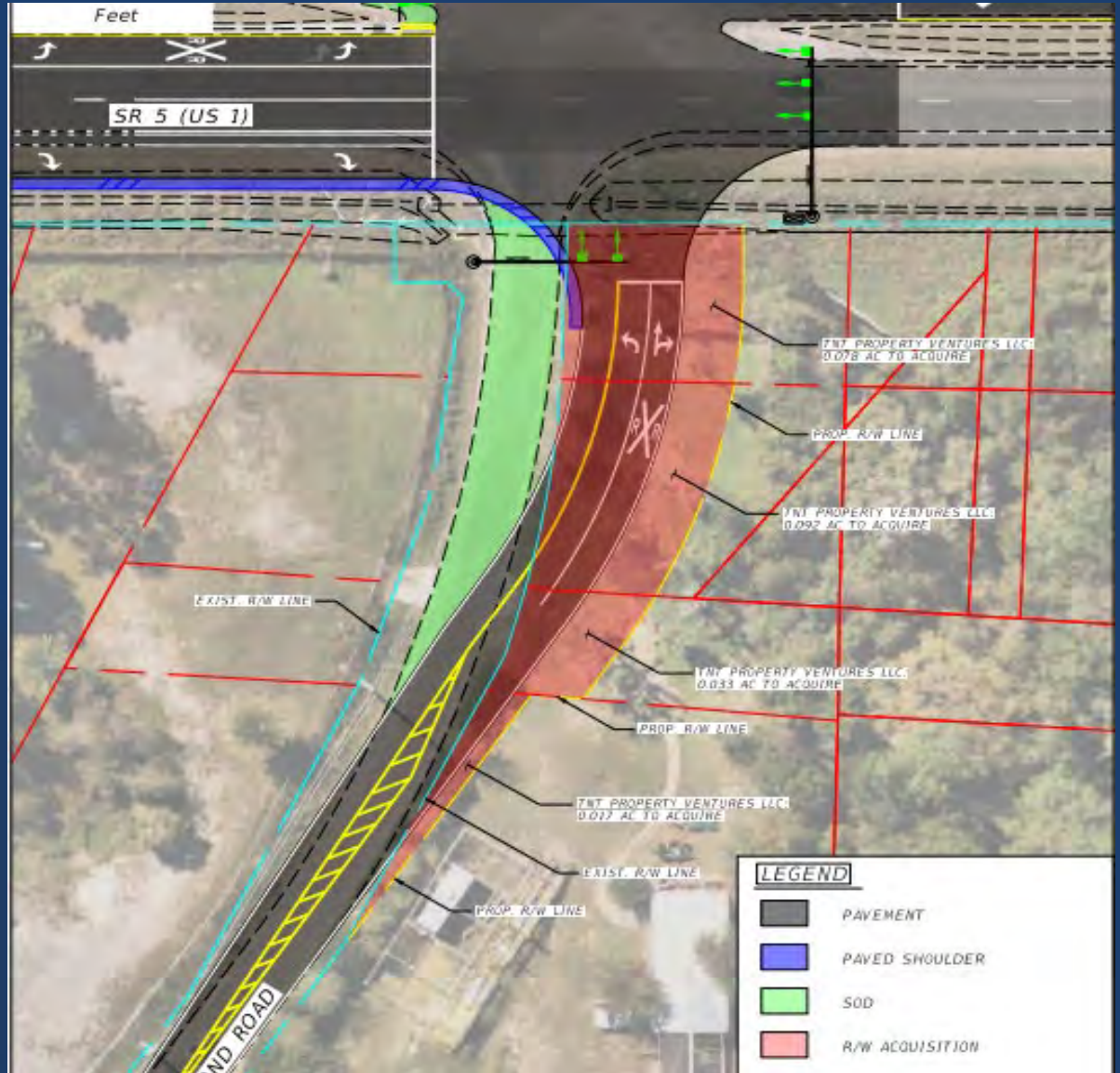
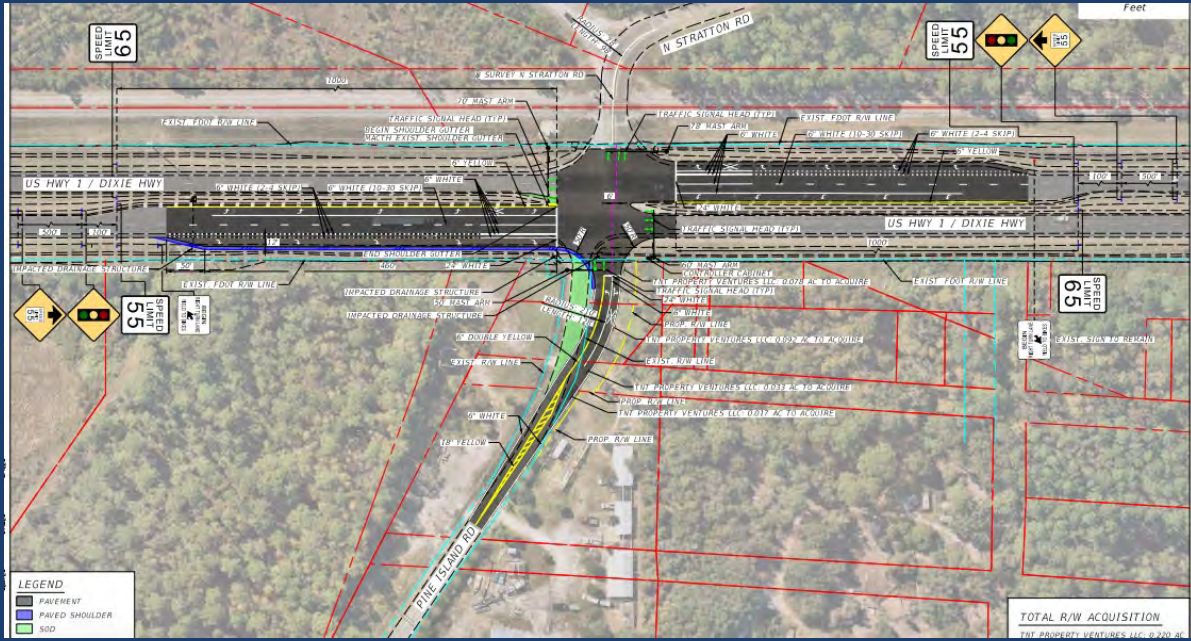


Infrastructure – Longleaf Pine Parkway (Fall 2024)



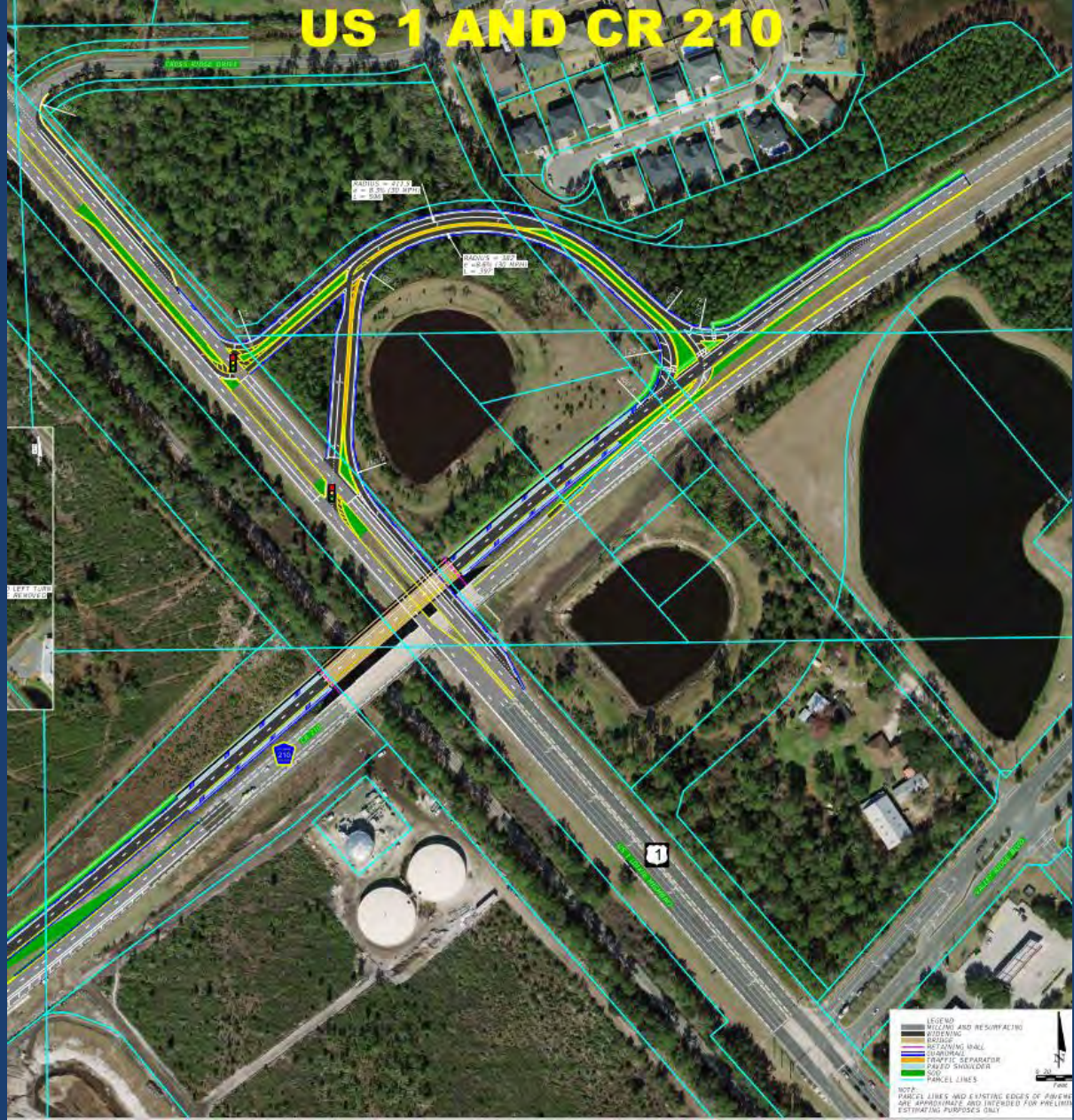
CR 2209 Extension and International Golf Parkway/SR16 Intersection





Pine Island Road and U.S. 1 Intersection (2024)





Safe Rail Project – US 1 and CR 210 (\$6 mil and \$22 Fed)

Beach Walkover Improvements (14 replacement 3 additional)



Parks Investment Plan (2021 – 2024)

Northwest Recent & Current Capital Investment



Alpine Shoreline



Riverdale Boat Ramp



Mill Creek Park

Total exceeds \$100 Million and over 30 new and existing park facilities.



Parks Investment Plan (2021 – 2024)

Northeast Recent & Current Capital Investment



PV West Boat Ramp



Vilano Beachfront Park



Mussallem Beachfront Park

Total exceeds \$100 Million and over 30 new and existing park facilities.

Parks Investment Plan (2021 – 2024)

Southeast Recent & Current Capital Investment



Crescent Beach Park



Collier Blocker Puryear Park



San Sebastian Boat Ramp

Total exceeds \$100 Million and over 30 new and existing park facilities.

Parks Investment Plan (2021 – 2024)

Southwest Recent & Current Capital Investment



Flagler Estates Community Center



Al Wilke Park

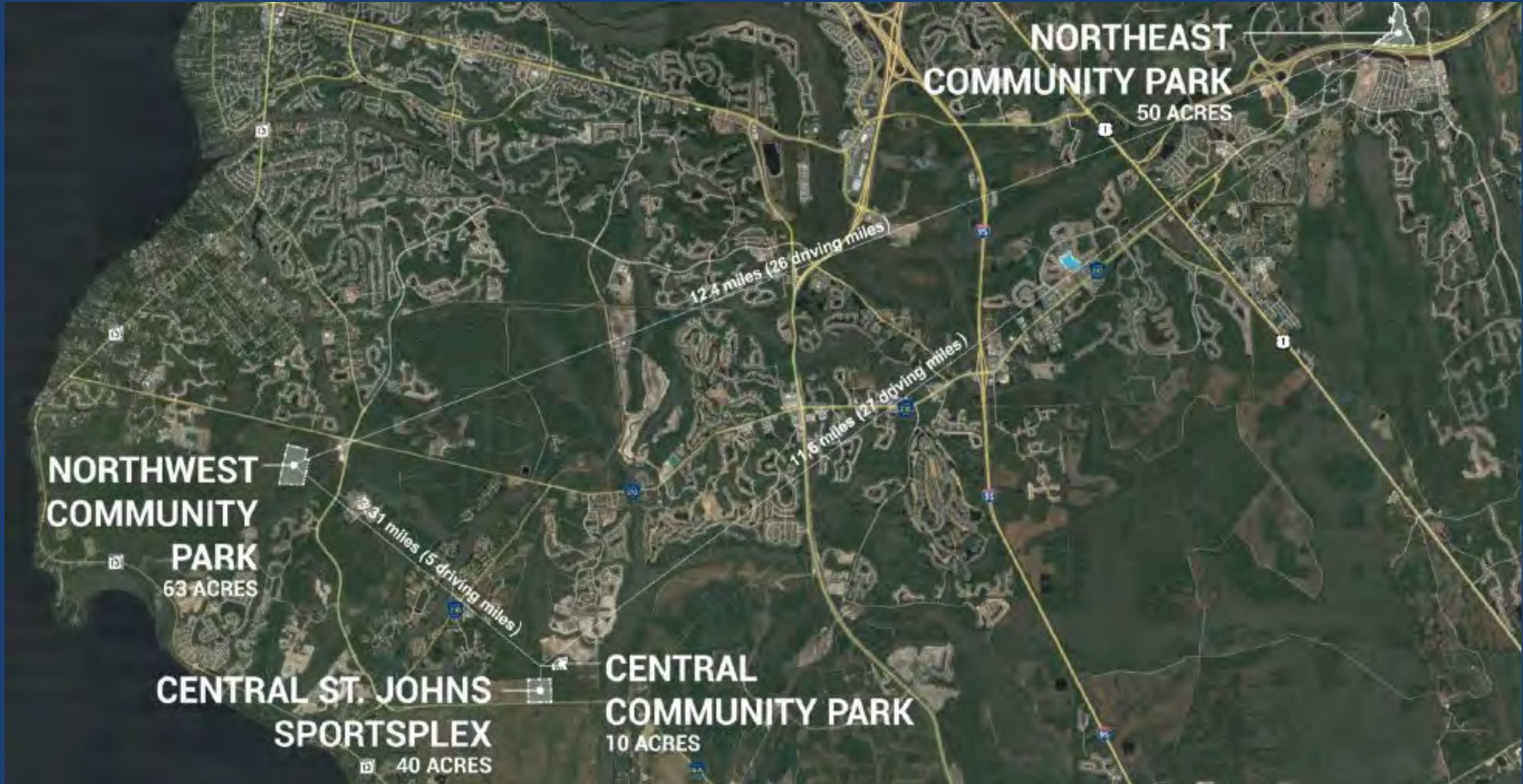


SJC Golf Course

Total exceeds \$100 Million and over 30 new and existing park facilities.



Five-Year Parks Investment Plan (\$123 M)



Central St. Johns Sportsplex



Central St. Johns Community Park – Library Hub



Northwest Community Park - Library Hub



Northeast Community Park – Full Library



School Facilities and New Construction

- **Trout Creek Academy (Shearwater):** Construction On-Schedule for 24/25 SY
- **Lakeside Academy (Beacon Lake):** Construction On-Schedule for 24/25 SY
- **K-8 “PP” (RiverTown):** Construction Commenced On-Schedule for 25/26
- **K-8 “QQ” (SilverLeaf):** Planning & Design underway; projected 26/27 SY
- **K-8 “RR” (Nocatee):** Planning & Design underway; projected 26/27 SY

- **South Woods Elementary Classroom Expansion:** Planning & Design underway; projected mid 25/26 SY
- **Hastings High School Repairs, Renovations and Site Improvement project:** Planning and Design underway



Financial Stewardship



Intergovernmental Affairs

Under the Board's direction to leverage matching funds, partnerships, and regionally significant projects, the Office has secured more than \$170 million in less than 20 months.

OFFICE OF INTERGOVERNMENTAL AFFAIRS
State & federal funds secured since October 1, 2022.

112,775,000

STATE & FEDERAL
APPOPRIATIONS

57,355,025

GRANTS & SUPPLEMENTAL FUNDING

millions

125



2024 Legislative Session

An Overview



FY 25 State of Florida Budget

\$116.5 BILLION

The budget represents a small decrease from the previous fiscal year.

GOVERNOR'S VETO

\$950 million and more than 600 local projects.



SJC PROJECTS

**\$26.5 MILLION IN
STATE APPROPRIATIONS**



**Regional Training Facility
\$7.5 million**



**State Road 16
\$7.5 million**



**County Road 2209
\$6.5 million**



**South Ponte Vedra Beach
\$4.75 million**



**Lincolnville Museum
\$225,000**



CONSERVATION BUDGET

IMPLEMENTING LANGUAGE

Provides SJC access to \$440 million in unexpended balance of DEP land acquisition funds.

RURAL & FAMILY LANDS

Expands funding for working lands conservation program by \$200 million in FY 2024-25, including up to \$100 million recurring annually.



FEDERAL



REQUESTS



GUANA FLOOD CONTROL SYSTEM

\$2.5 million federal match to rebuild channel's hazard mitigation system.

Protects 10,000 residents and nearly 3,000 properties in Guana Watershed.



AIRPORT PARTNERSHIP PROJECT

\$9.65 million federal match to construct access road & utility infrastructure.

Multi-year project buildout that will create nearly 1,000 new full-time jobs.



Beach Nourishment Projects



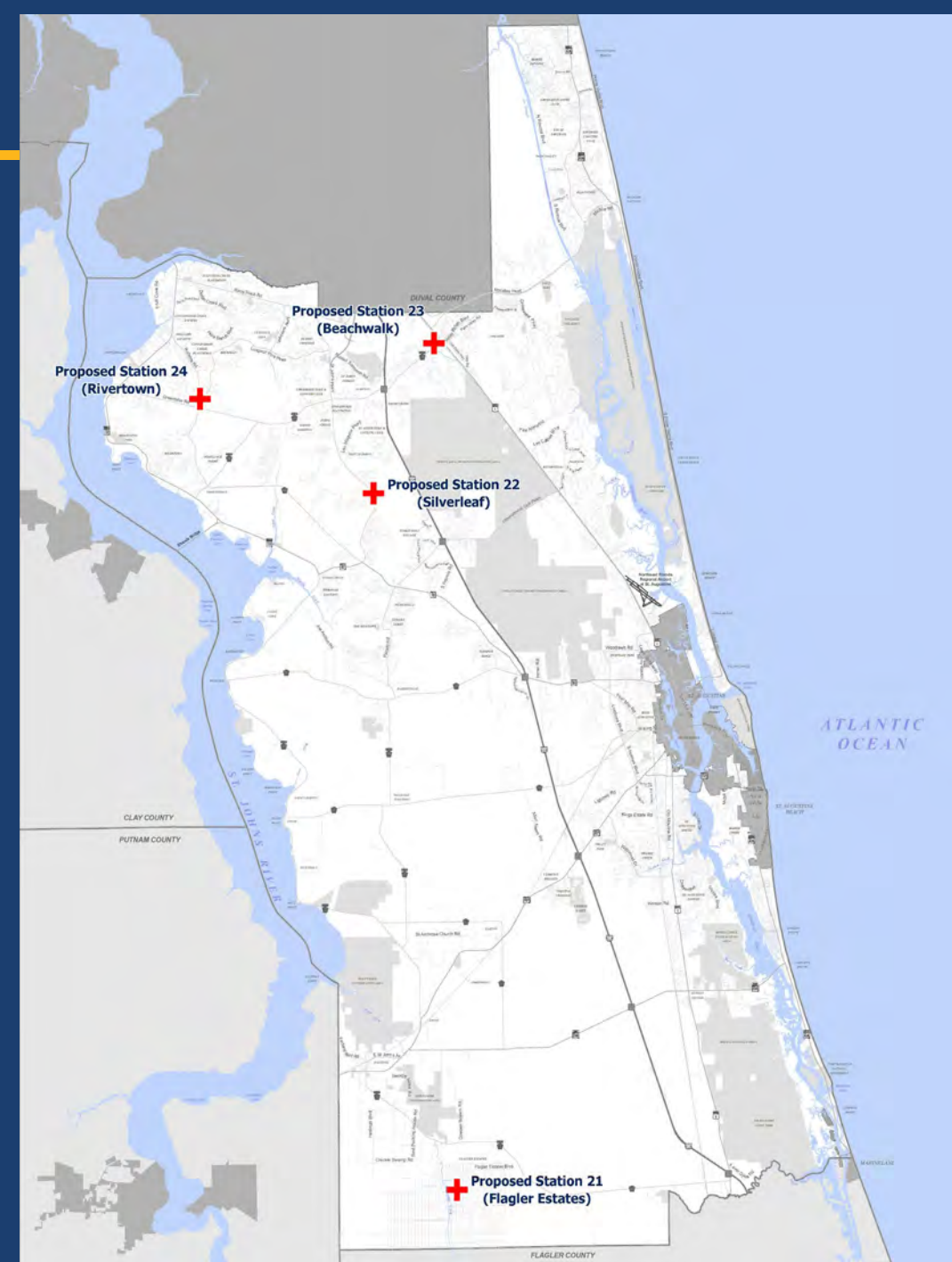
Beach Nourishment Projects



Public Safety Investment Plan

Proposed Fire Stations

- Fire Station 21 in Flagler Estates
- Fire Station 22 in SilverLeaf region
- Fire Station 23 in Beachwalk/
Twin Creeks region
- Fire Station 24 in Longleaf Pines
Region



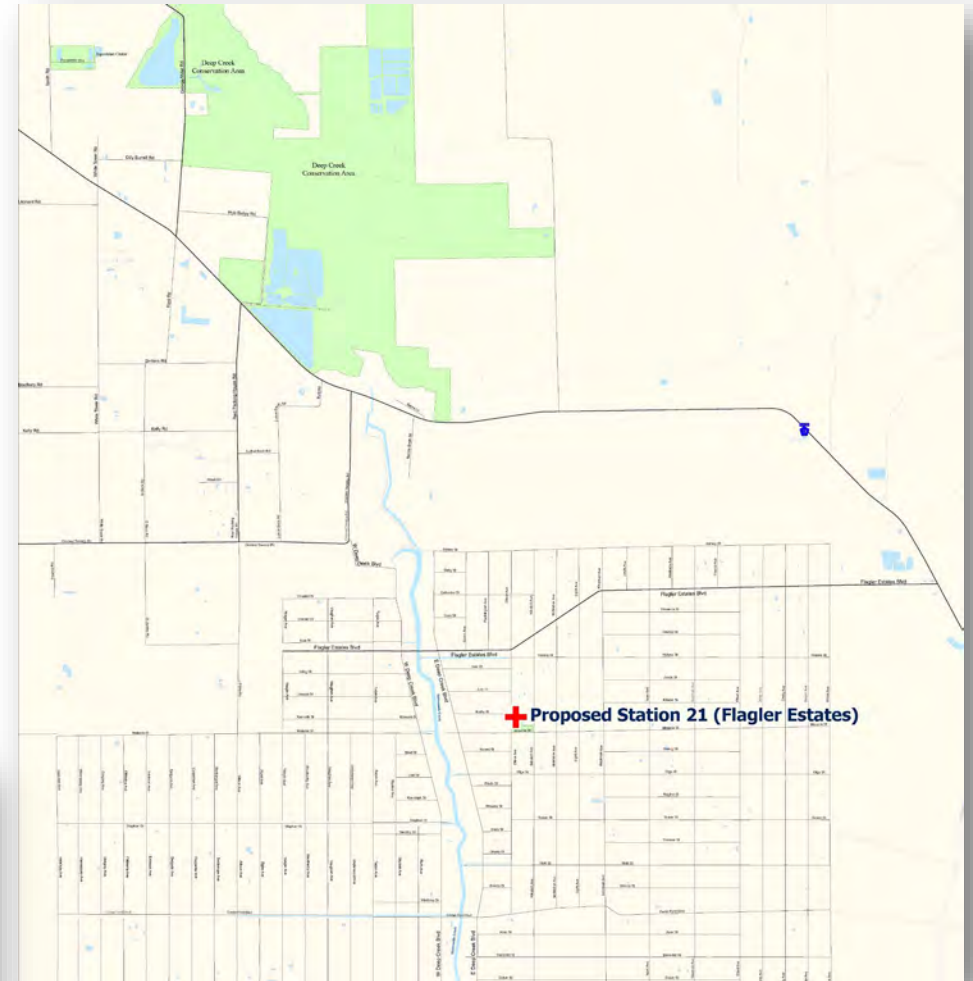
Improve Insurance Services Office (ISO) Rating



New Fire Station 21

Located in the Flagler Estates region to include:

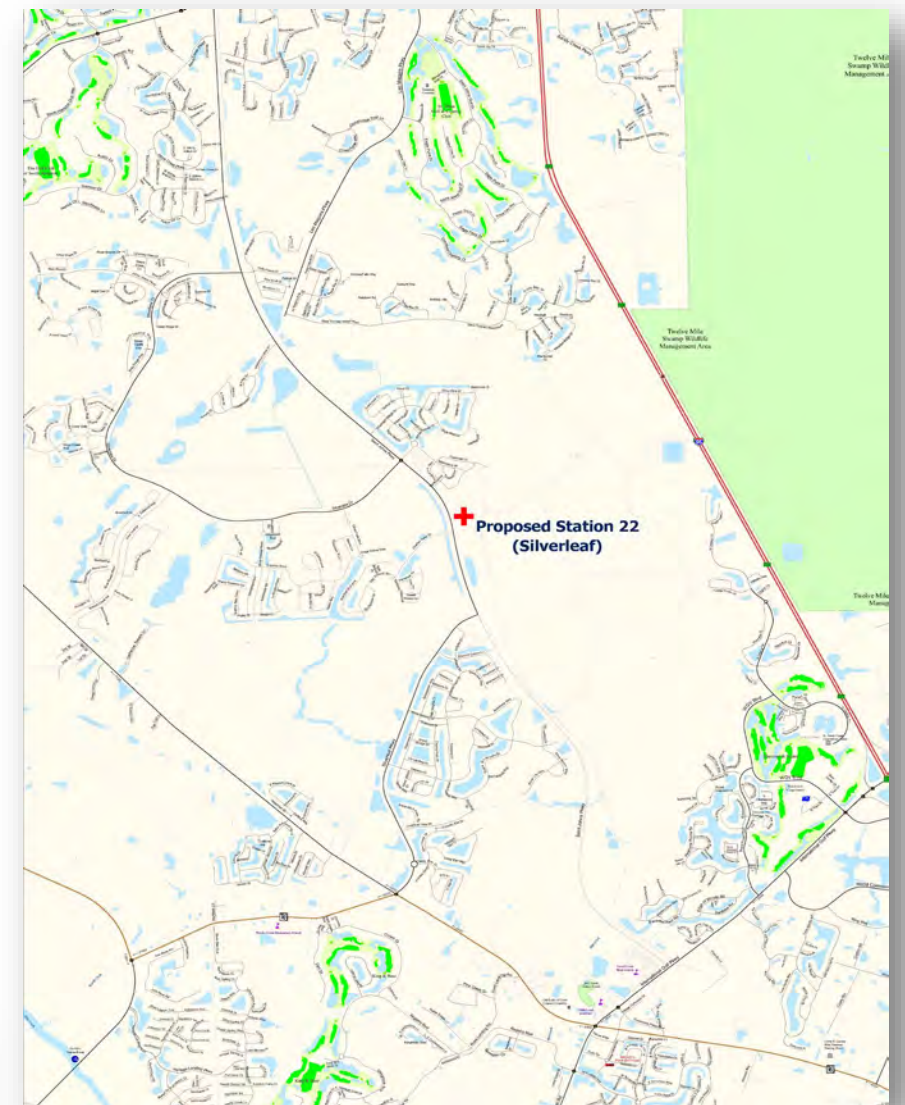
- ✓ 1 Advanced Life Support Engine, 1 Water Tanker
- ✓ Include Sheriff's Substation.
- ✓ Necessitates 12 additional firefighters
- ✓ County will pursue SAFER funding to offset initial personnel costs.
- ✓ **Estimated Completion: end of 2025**



New Fire Station 22

Located in Silverleaf region to include:

- ✓ 1 Advanced Life Support Engine
- ✓ 1 Aerial Apparatus, 1 Water Tanker, 1 Ambulance
- ✓ Sheriff Substation
- ✓ Future Combined Fire/SJSO Backup Communications Center
- ✓ Necessitates 33 additional firefighters
- ✓ Staff will pursue SAFER grants to offset initial personnel costs.
- ✓ **Estimated Completion: end of 2027**



New Fire Station 23

Located in Beachwalk/Twin Creeks region to include:

- ✓ 1 Advanced Life Support Engine, 1 Advanced Life Support Ladder, 1 Ambulance
- ✓ Sheriff Substation.
- ✓ Necessitates 30 additional firefighters
- ✓ County will pursue SAFER funding to offset initial personnel costs.
- ✓ **Estimated Completion: end of 2028**



New Fire Station 24

Located in Long-Leaf Pine / Roberts Rd. region to include:

- ✓ 1 Advanced Life Support Engine, 1 Ambulance
- ✓ Sheriff Substation.
- ✓ Necessitates 21 additional firefighters
- ✓ County will pursue SAFER funding to offset initial personnel costs.
- ✓ **Estimated Completion: end of 2030**



Sheriff's Headquarters Expansion

Sheriff's Headquarters:

- ✓ Centralized in the County at SR16 and I95.
- ✓ Relocated to the current training and 911 communications center site.
- ✓ Moved out of flood zone and active railroad; addresses current and future growth needs.
- ✓ **Estimated Completion: end of 2027**



New District 23 Medical Examiner Facility

Tri-County Medical Examiner Facility:

- ✓ Serving Flagler, Putnam, & St. Johns
- ✓ New facility equipped to serve combined populations
- ✓ Relocate out of flood zone
- ✓ Shared operating costs with Flagler & Putnam
- ✓ **Estimated Completion: end of 2027**



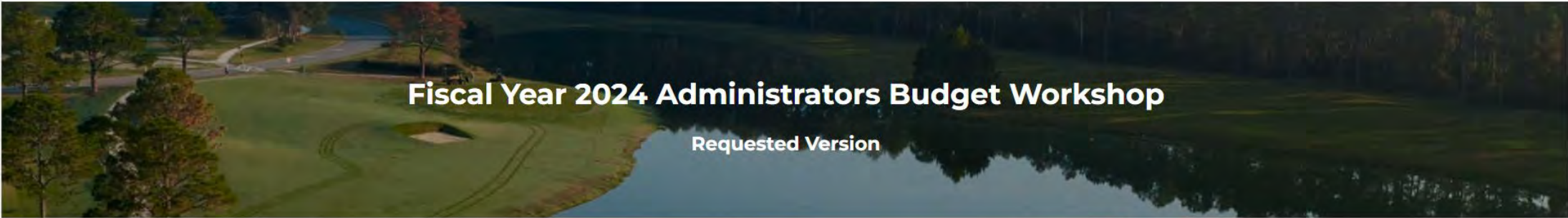
Open Governance & Transparency



New Budget Process



Budget Dashboard



Fiscal Year 2024 Administrators Budget Workshop

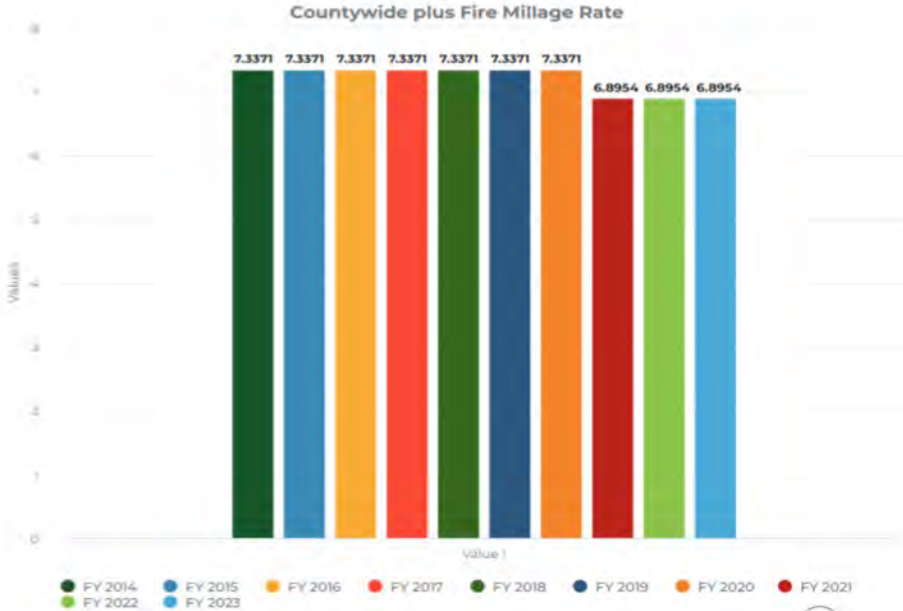
Requested Version

[A Note To Our Readers](#) [County Budget Summary](#) [The Budget by Service Area](#)

 Print

Countywide plus Fire Millage Rate Graph

Rate charged for every \$1,000 of taxable property.



SJC Citizens Academy



www.sjcfl.us/sjc101/



SJC Student Shadowing Program



Design a roadmap for the future

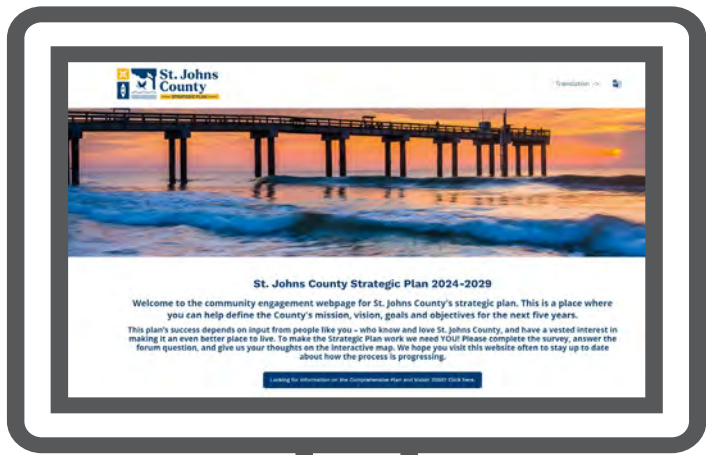
planning type	 Strategic	 Comprehensive	 Economic development
purpose	Assesses where an enterprise- or department-wide organization is now, sets a vision for where it wants to go, and defines how it will get there	A document designed to guide the future actions of a jurisdiction. It presents a vision for a community's future with long range goals, objectives, and policies	Creates a vision and road map to proactively guide growth and development through actionable policies and strategies
focus(es)	Organizational direction Resource alignment Collective impact and stewardship in decision-making, policies, plans, programs, and policies	Land use and zoning Population growth Housing Transportation/Mobility Economic development Environmental stewardship	Population fluctuations Job creation and retention Market stability Partnership and investment Workforce attraction and retention
lifespan	3 – 5 years	10 – 20 years	3 – 5 years



Ongoing Input Opportunities



#YourGovernment



www.sjcfl.us/sjc-strategic-plan



COMPREHENSIVE
PLAN UPDATE
#YourCounty

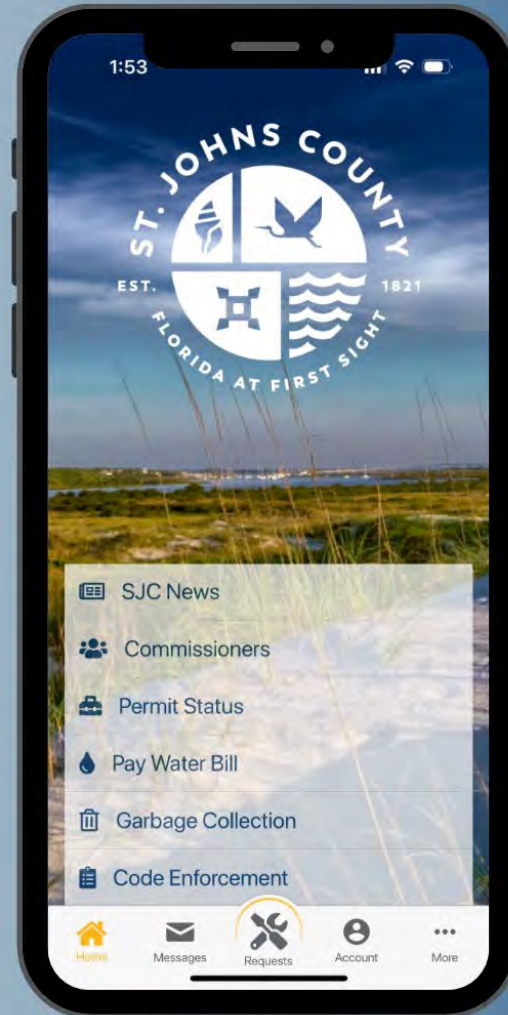


SJCPlanUpdate.com



SJC CONNECT APP

Report Public Property Issues, Private Property Complaints, & more!



SCAN ME



Quality Education



Information below contains results from the Florida Assessment of Student Thinking (FAST), B.E.S.T. Science, End-of-Course (EOC) Exams and STAR statewide assessments (excludes virtual schools, lab schools, FSDB, and college authorized charter schools).



2024 STATEWIDE ASSESSMENT ACHIEVEMENT HIGHLIGHTS

- **1st** in the state in English Language Arts (ELA) Achievement - Grades 3 - 10
- **1st** in the state in Math Achievement - Grades 3, 4, 8, Algebra I End-of-Course (EOC)
- **1st** in the state in Science Achievement - Grade 5, Biology EOC
- **1st** in the state in Civics EOC
- **1st** in the state of US History EOC (Tie)

An aerial photograph of a city featuring a prominent white building complex with multiple wings and a central tower. A large blue lake is situated in the middle ground, surrounded by greenery and parking areas. The foreground shows a large parking lot with many cars. The text 'Economic Resiliency' is overlaid in large white letters on the left side of the image, with a thin orange horizontal line below it.

Economic Resiliency

UF Health Durbin Park

2901-3105 new jobs
150 Beds
\$1 Billion in NE FL



Publix Central Pharmaceutical Facility

400 New Jobs
\$29 million Building
\$88 million high-tech robotic equip



345 jobs retained
100 new jobs
\$85.5 million investment



The Amp

\$35.4 Million Economic Impact
77 Concerts
#1 in US / #2 Worldwide in Pollstar Mag



88 Concerts

\$5.1 million Economic Impact

Ponte Vedra Concert Hall



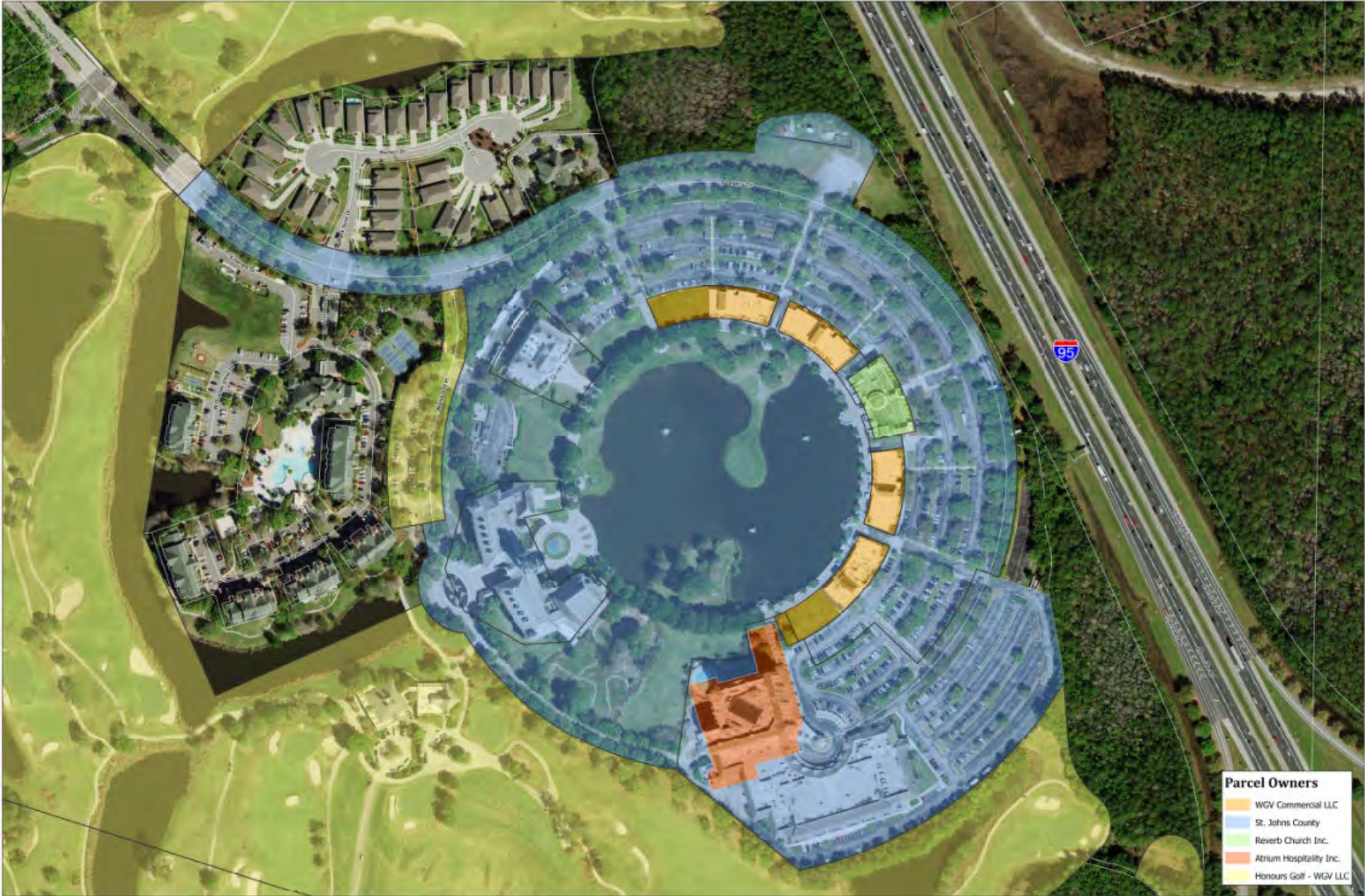
Rendering of Ponte Vedra Concert Hall Renovation

PONTE★VEDRA
CONCERT HALL



FISHER | KOPPENHAFFER
ARCHITECTURE + INTERIOR DESIGN

World Golf Village Acquisition



World Golf Village Acquisition

Purchase price is \$5,500,000

- **Real Property: \$5,297,500**
- **Inventory and Marks: \$ 202,500**



Florida Museum of Black History



The Team





Brad Bradley
Deputy CA



Colin Groff
Deputy CA



Ryan Kane
Parks and Recreation



Jesse Dunn
OMB



Joseph Giammanco
Emergency Management



Angie Cowling
Chief of Staff



Neal Shinkre
Utility Director



Sarah Taylor
Chief Performance
Officer



Greg Caldwell
Public Works



Wayne Larson
Public Affairs





Sean McGee

Fire Chief



Tera Meeks

Tourism Development



Joseph McDermott

Veteran's Services



Jaime Locklear

Purchasing



Wendolyn Sneed

Medical Examiner



Corey Bowen

Land Management



Mike Roberson

Growth Management



Howard White

Building Official



Debra Gibson

Library System



Shawna Novak

HHS

500 St. Johns County, Florida
ADMINISTRATION





Adam Tecler

Intergovernmental Affairs



Daniel Whitcraft

Facilities Management



Ann Ashworth

Human Resources



Laura Dodd

Risk Management



Thank you

