



St. Johns County 2024



1

Growth &
Infrastructure

2

Financial
Stewardship

3

Open
Governance &
Transparency

4

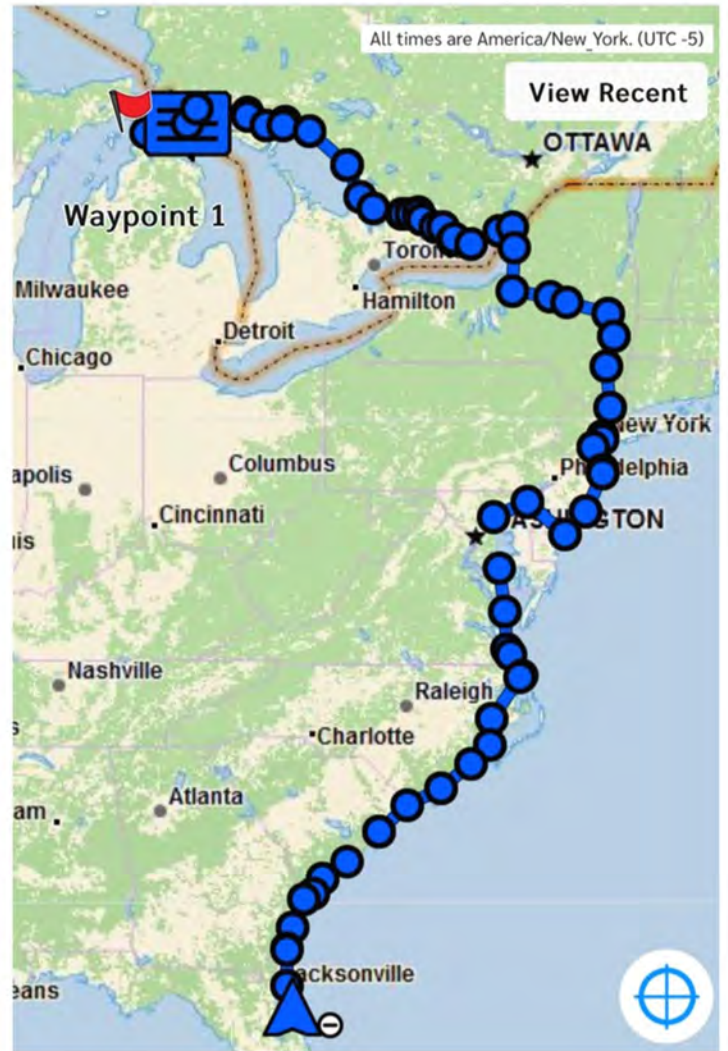
Economic
Resiliency



Map

Message

Locate



Evolve and Grow - with Adaptation and Vigor



117,341 acres

31% of total conservation area in
unincorporated St. Johns County



An aerial photograph of a landscape, possibly a coastal or riverine area, showing a winding river or canal system. The terrain is a mix of green fields, brownish patches, and some buildings or structures. The image is overlaid with a dark blue semi-transparent filter. The text 'Growth & Infrastructure' is prominently displayed in white, bold, sans-serif font on the left side of the image. A thin orange horizontal line is positioned below the text.

Growth & Infrastructure

Infrastructure - Roadway Projects in 2024

- ✓ CR 2209
- ✓ CR 210 West (Greenbriar to Cimarrone)
- ✓ CR 210 East
- ✓ Longleaf Pines Parkway
- ✓ Mickler Road & SR A1A
- ✓ Preservation Trail Signal
- ✓ Pavement Management
- ✓ Pine Island & US 1 Signal
- ✓ Racetrack Road Widening
- ✓ SR 16 & IGP Improvements
- ✓ Stratton Blvd Signal
- ✓ Woodlawn Road
- ✓ Kings Estate Road
- ✓ **\$298 million**

Infrastructure - Drainage Projects in 2024

- ✓ Winton Circle
- ✓ Kings Road
- ✓ Santa Rosa
- ✓ Holmes Blvd
- ✓ Countywide Underdrain
- ✓ North Rodriquez
- ✓ Porpoise Point
- ✓ San Julian
- ✓ Surfwood
- ✓ Kings Estate Road
- ✓ **\$49 million**

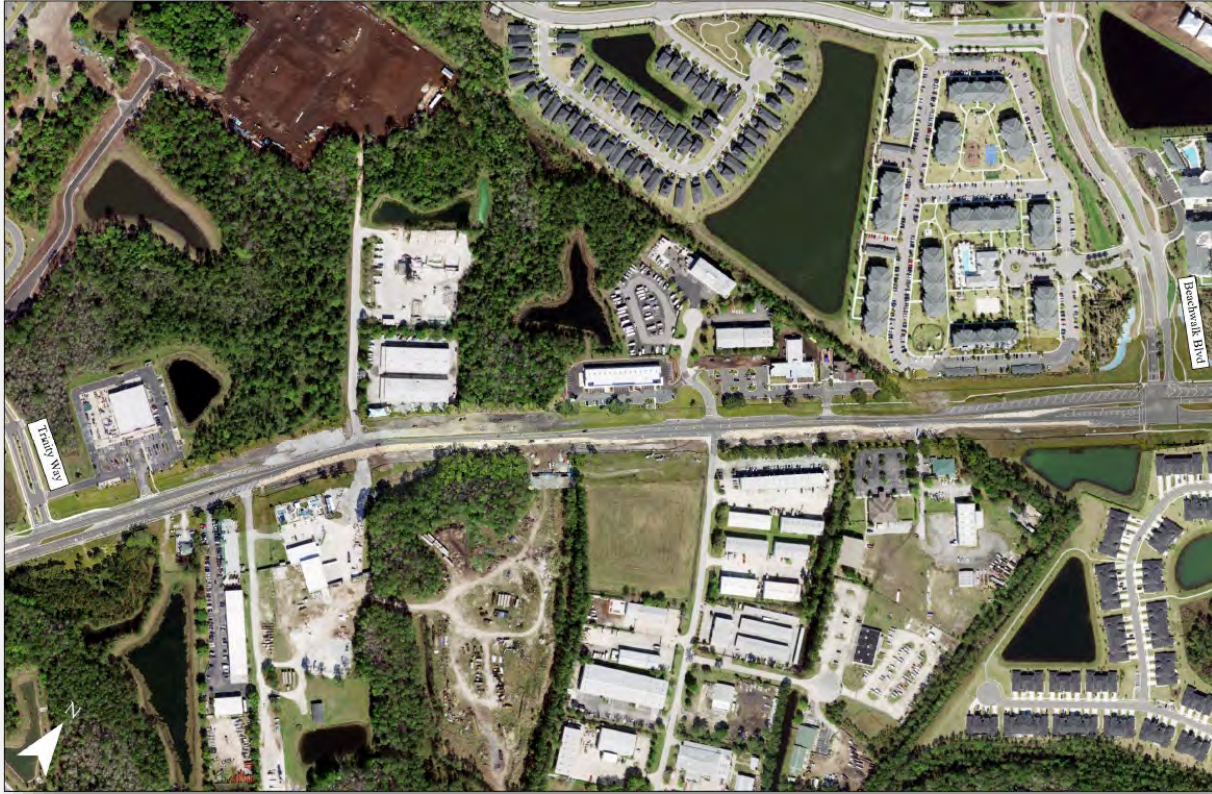
Infrastructure - Facilities Projects in 2024

- ✓ Water Utility Lab
- ✓ Fire Station and SJSO Substation #11
- ✓ Flagler Estates Community Center
- ✓ Emergency Operations Center Annex
- ✓ Fire Station #21
- ✓ Fire Station #22
- ✓ Hastings Community Center & Library
- ✓ Public Service Center
- ✓ Sheriff Fleet & Supply
- ✓ Tillman Ridge Tipping Floor for solid waste
- ✓ **\$68 million**

Infrastructure - Coastal Protection Projects in 2024

- ✓ Ponte Vedra Restoration FEMA Berm
- ✓ St. Augustine USACE Project
- ✓ The North Ponte Vedra project
- ✓ Ponte Vedra Beach Nourishment
- ✓ South Ponte Vedra and Vilano Beach USACE Coastal Storm Risk Management (CSRМ) Flood Control and Coastal Emergencies (FCCE) Project
- ✓ St. Augustine USACE Shore Protection Project (SPP) FCCE Project,
- ✓ FEMA Summer Haven Rock Revetment
- ✓ Porpoise Point Drive Armoring,
- ✓ Summer Haven Intracoastal Waterway (ICW) Dredge Disposal Project.
- ✓ **\$173 million**

Infrastructure - CR 210 East (Summer 2025)



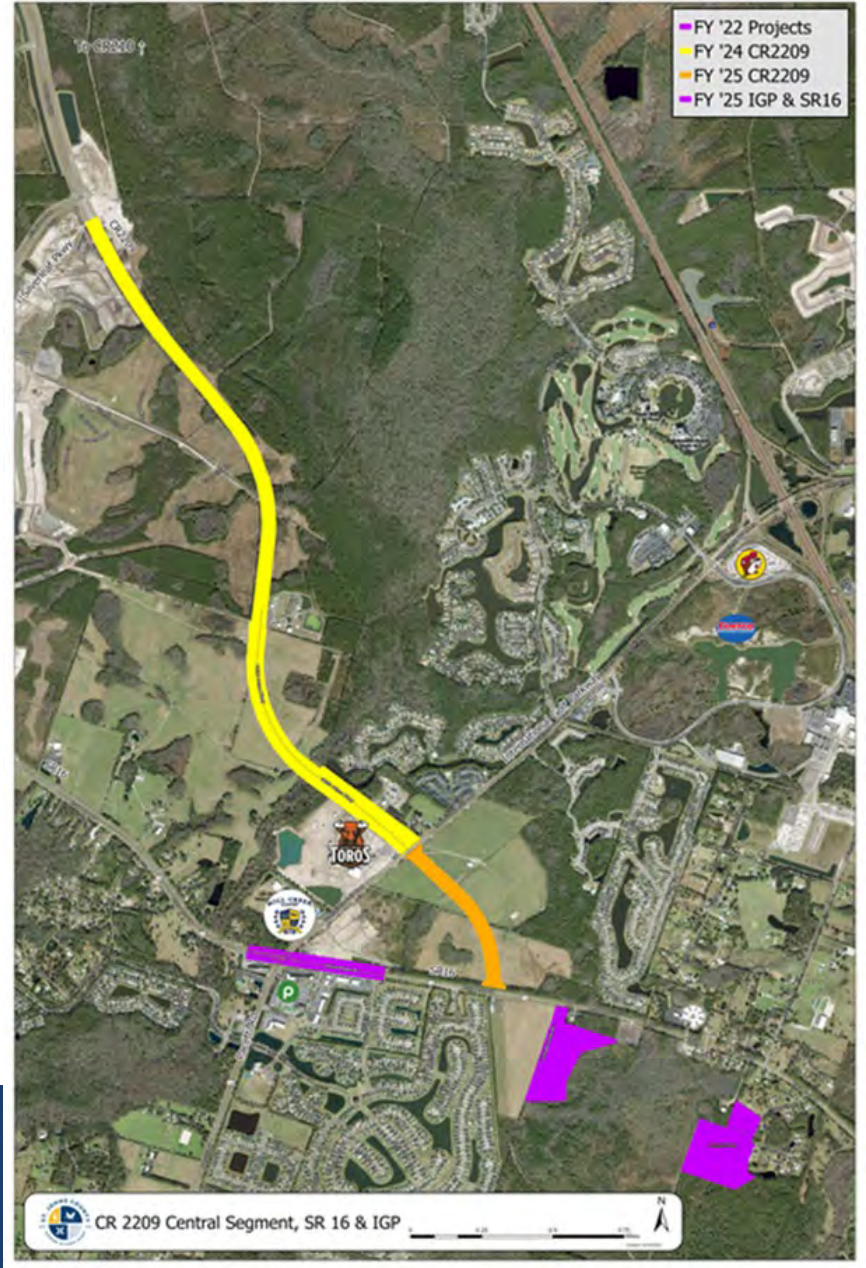
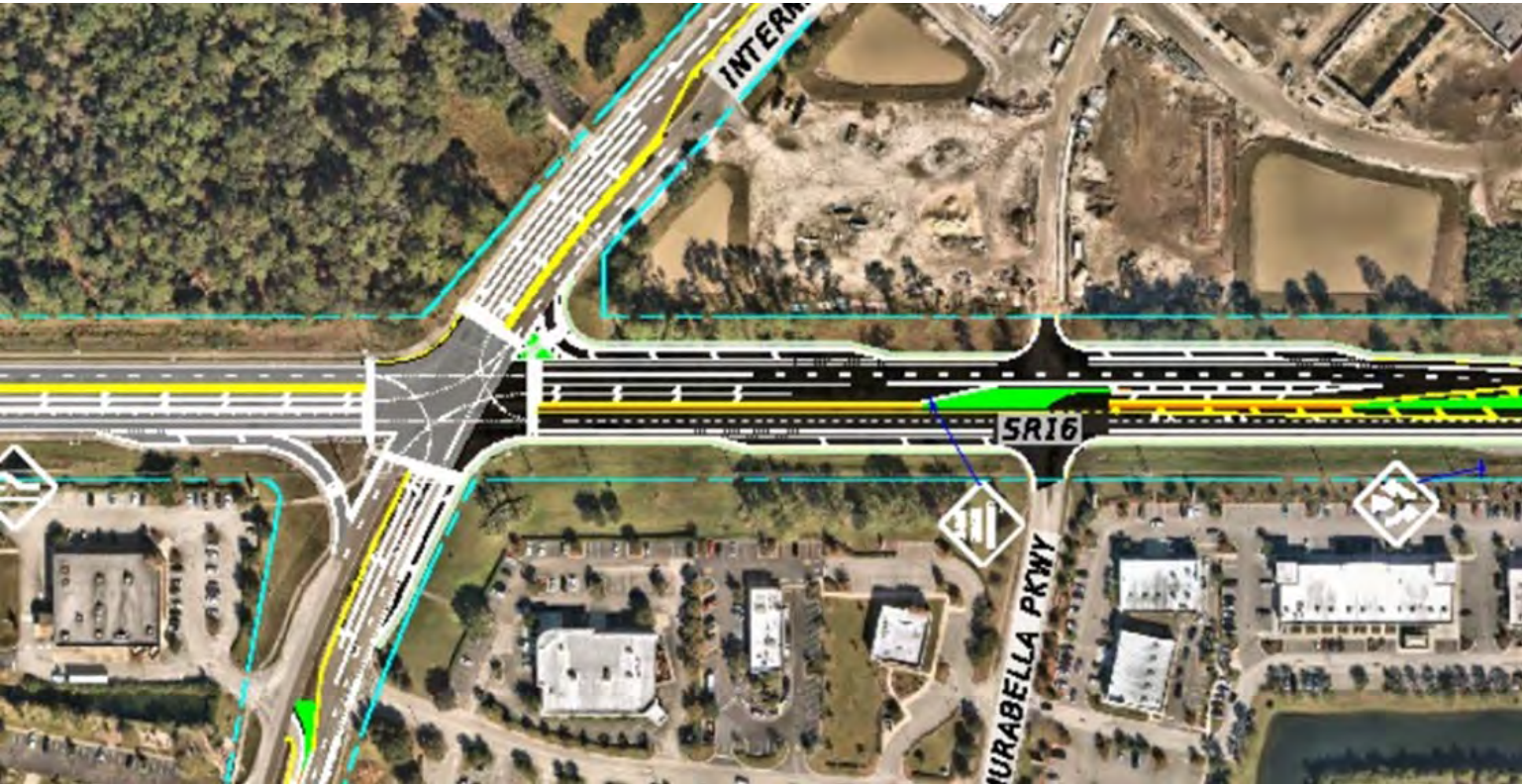
Infrastructure – CR 210 West (Sept 2025)

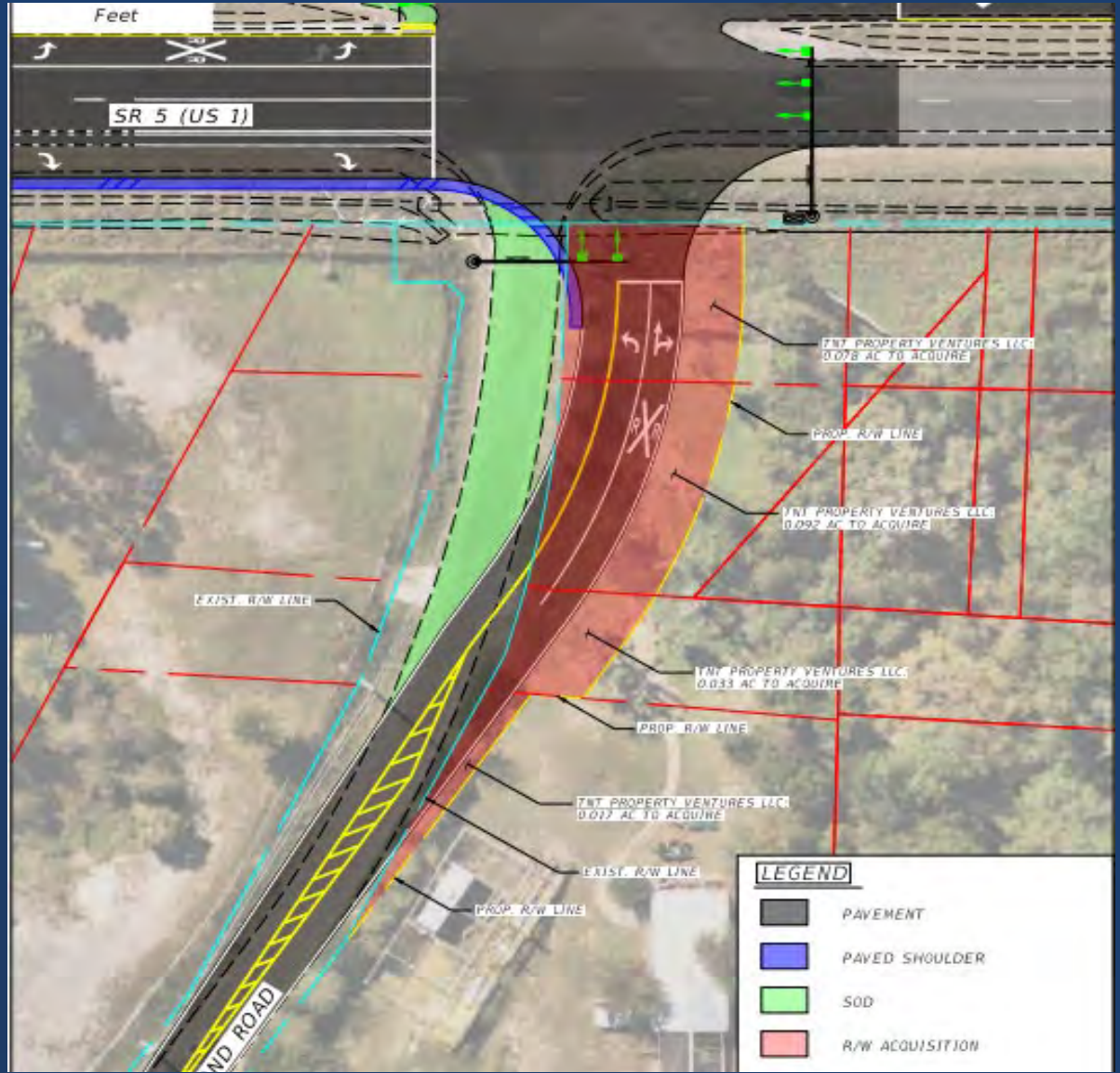
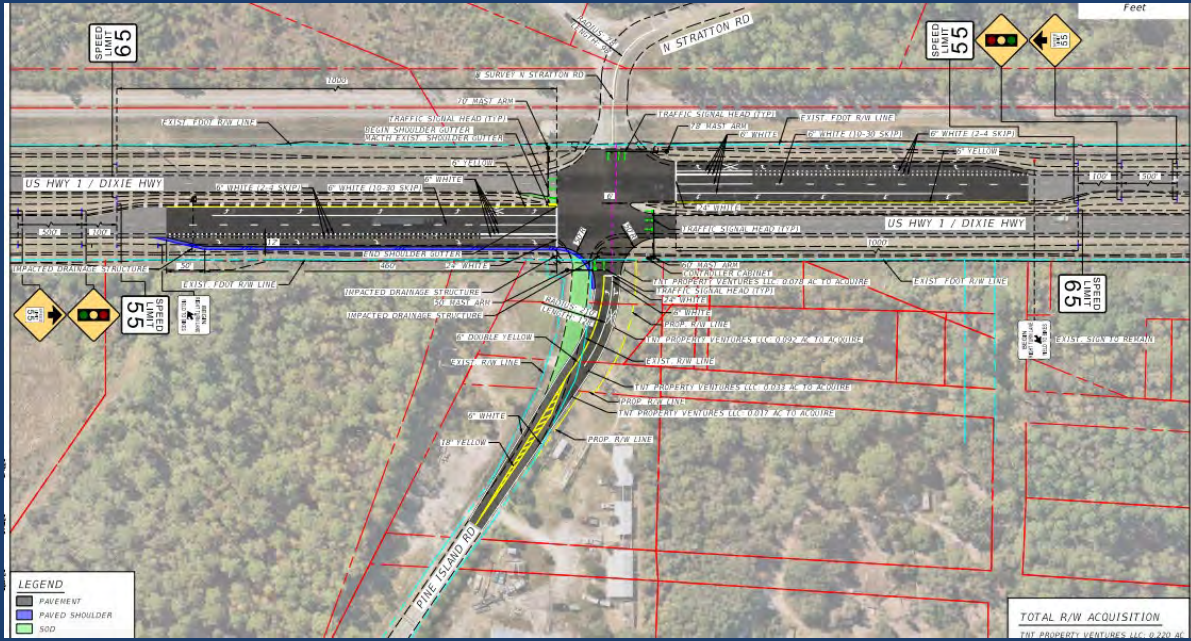


Infrastructure – Longleaf Pine Parkway (Fall 2024)



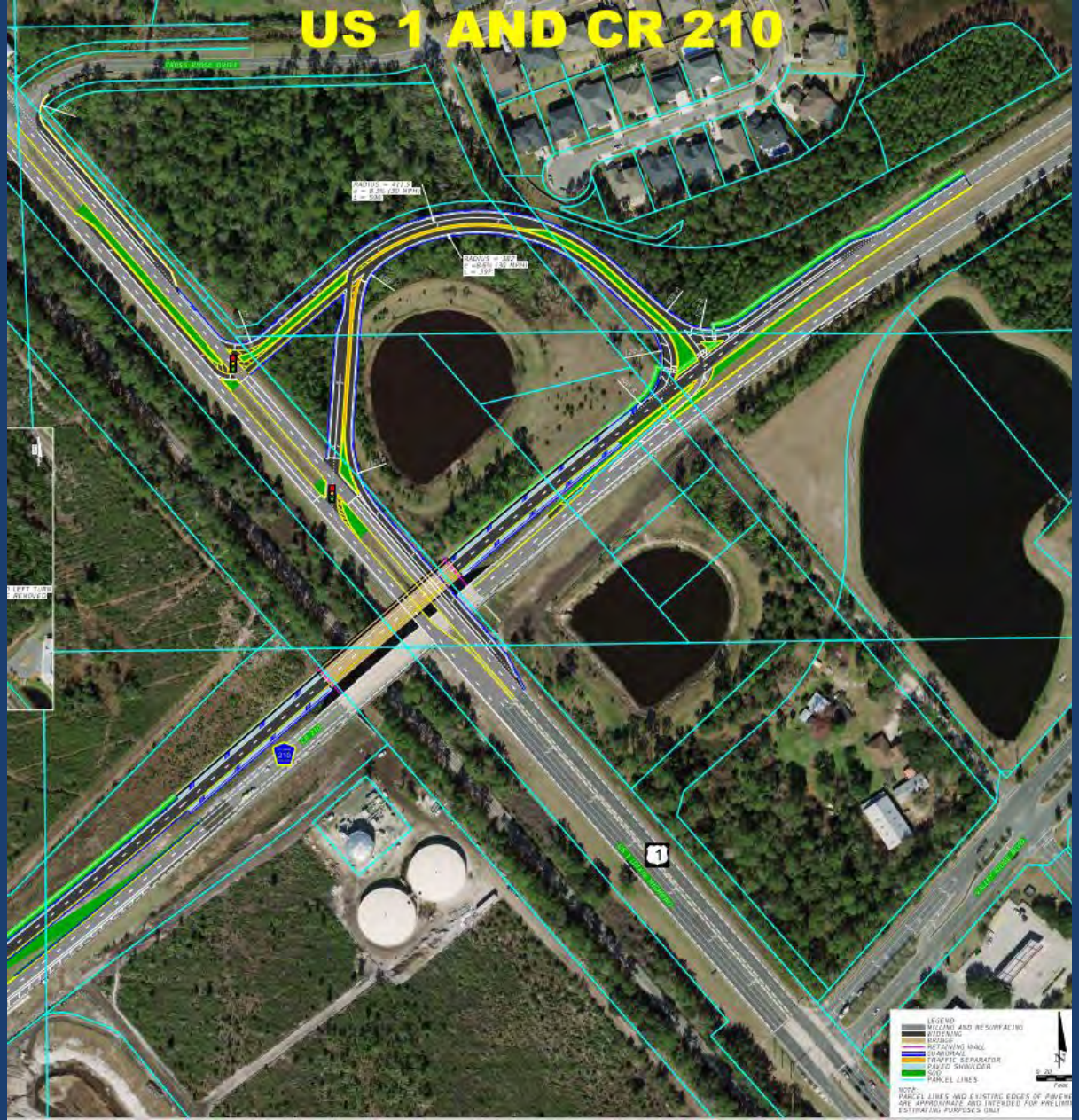
CR 2209 Extension and International Golf Parkway/SR16 Intersection





Pine Island Road and U.S. 1 Intersection (2024)





Safe Rail Project – US 1 and CR 210 (\$6M State - \$22 Fed)

Beach Walkover Improvements (14 replacement 3 additional)



Parks Investment Plan (2021 – 2024)

Northwest Recent & Current Capital Investment



Alpine Shoreline



Riverdale Boat Ramp



Mill Creek Park

Total exceeds \$100 Million and over 30 new and existing park facilities.

Parks Investment Plan (2021 – 2024)

Northeast Recent & Current Capital Investment



PV West Boat Ramp



Vilano Beachfront Park



Mussallem Beachfront Park

Total exceeds \$100 Million and over 30 new and existing park facilities.

Parks Investment Plan (2021 – 2024)

Southeast Recent & Current Capital Investment



Crescent Beach Park



Collier Blocker Puryear Park



San Sebastian Boat Ramp

Total exceeds \$100 Million and over 30 new and existing park facilities.

Parks Investment Plan (2021 – 2024)

Southwest Recent & Current Capital Investment



Flagler Estates Community Center



Al Wilke Park

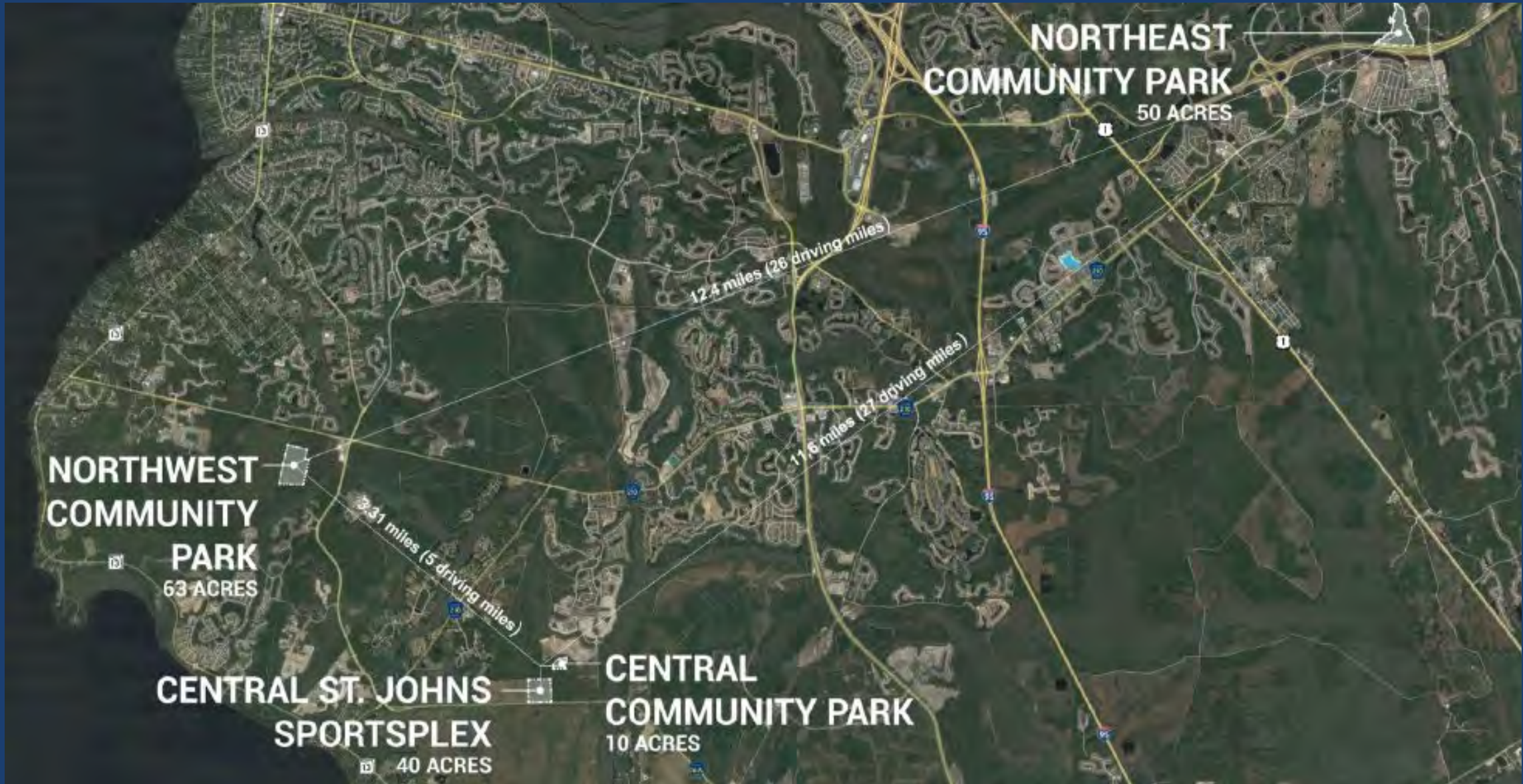


SJC Golf Course

Total exceeds \$100 Million and over 30 new and existing park facilities.



Five-Year Parks Investment Plan (\$123 M)



Central St. Johns Sportsplex



Central St. Johns Community Park – Library Hub



Northwest Community Park - Library Hub



Northeast Community Park – Full Library



School Facilities and New Construction

- **Trout Creek Academy (Shearwater):** Construction On-Schedule for 24/25 SY
- **Lakeside Academy (Beacon Lake):** Construction On-Schedule for 24/25 SY
- **K-8 “PP” (RiverTown):** Construction Commenced On-Schedule for 25/26
- **K-8 “QQ” (SilverLeaf):** Planning & Design underway; projected 26/27 SY
- **K-8 “RR” (Nocatee):** Planning & Design underway; projected 26/27 SY

- **South Woods Elementary Classroom Expansion:** Planning & Design underway; projected mid 25/26 SY
- **Hastings High School Repairs, Renovations and Site Improvement project:** Planning and Design underway



Financial Stewardship



Intergovernmental Affairs

Under the Board's direction to leverage matching funds, partnerships, and regionally significant projects, the Office has secured more than \$170 million in less than 20 months.

OFFICE OF INTERGOVERNMENTAL AFFAIRS
State & federal funds secured since October 1, 2022.

112,775,000

STATE & FEDERAL
APPOPRIATIONS

57,355,025

GRANTS & SUPPLEMENTAL FUNDING

millions

125



2024 Legislative Session

An Overview



FY 25 Florida Budget

\$117.5 BILLION

The budget represents a nominal increase from the previous fiscal year.

GOVERNOR'S VETO

Governor may use his veto power to trim at least \$1 billion from budget.

IMPLEMENTING BILL

Provides SJC access to unexpended balance of DEP land acquisition funds, to be used for wildlife corridor/ Florida Forever project.

Significant Legislation



HJR 7017

Proposed constitutional amendment applies CPI index annually to homestead exemptions. Does not apply to school taxes.

SB 1638

Creates dedicated funding source for water quality projects and additional funding for conservation corridors.

SB 280

The bill implements a complex regulatory scheme for vacation rentals.

D
I
S
T
R
I
C
T
23

STATE APPROPRIATION
\$11.7 million

MEDICAL EXAMINER
REGIONAL OFFICE



C
E
N
T
R
A
L

STATE APPROPRIATION

\$7.5 million



PUBLIC SAFETY STATON

A
L
L

H
A
Z
A
R
D
S

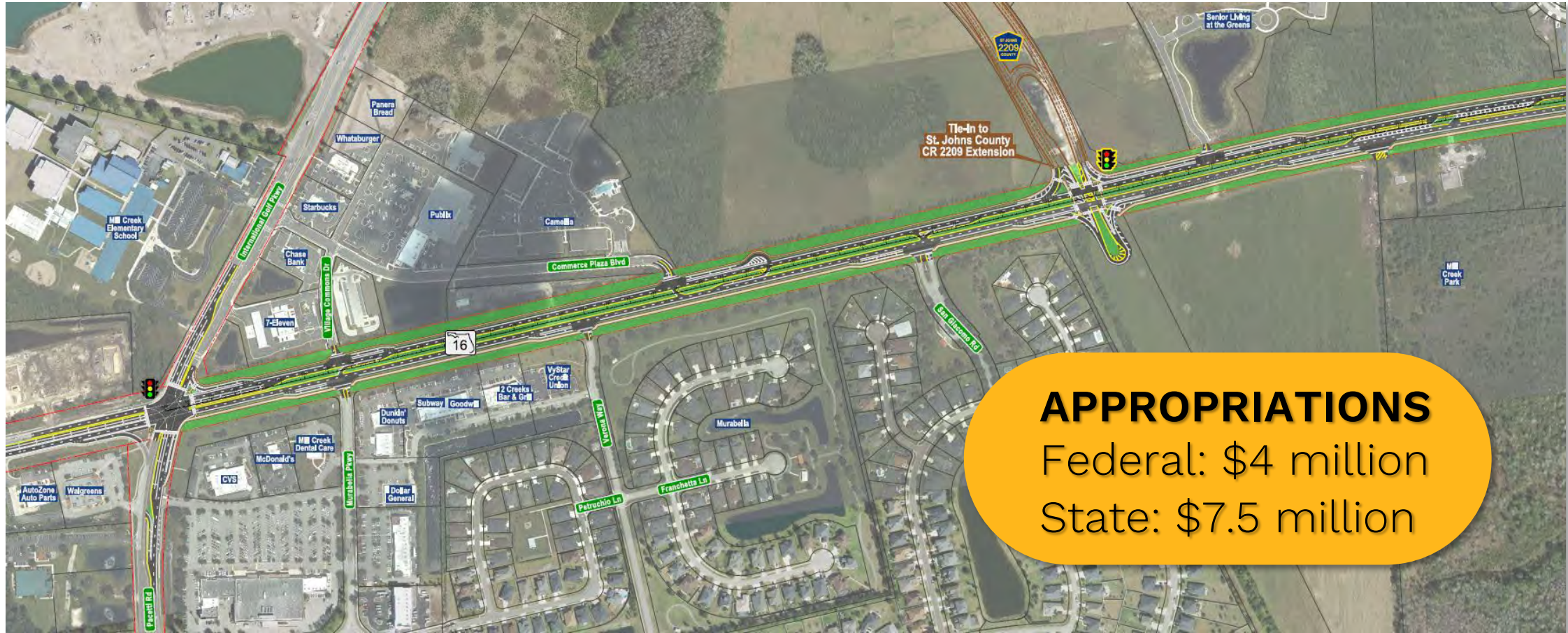


STATE APPROPRIATION

\$7.5 million

REGIONAL FIRE TRAINING FACILITY

STATE ROAD 16



C
O
U
N
T
Y

R
O
A
D

2209



**CENTRAL SEGMENT
STATE APPROPRIATIONS**

FY 24: \$15 million

FY 25: \$10 million



S
P
V
B



DUNE RESTORATION

STATE APPROPRIATION

\$4.5 million

L
I
N
C
O
L
N
V
I
L
L
E

M
U
S
E
U
M

STATE APPROPRIATION
\$250,000



V
I
L
A
N
O

B
E
A
C
H

MAIN STREET



STATE APPROPRIATION

\$175,000

Beach Nourishment Projects



Beach Nourishment Projects



Public Safety Investment Plan

Proposed Fire Stations

- Fire Station 21 in Flagler Estates
- Fire Station 22 in SilverLeaf region
- Fire Station 23 in Beachwalk/
Twin Creeks region
- Fire Station 24 in Longleaf Pines
Region



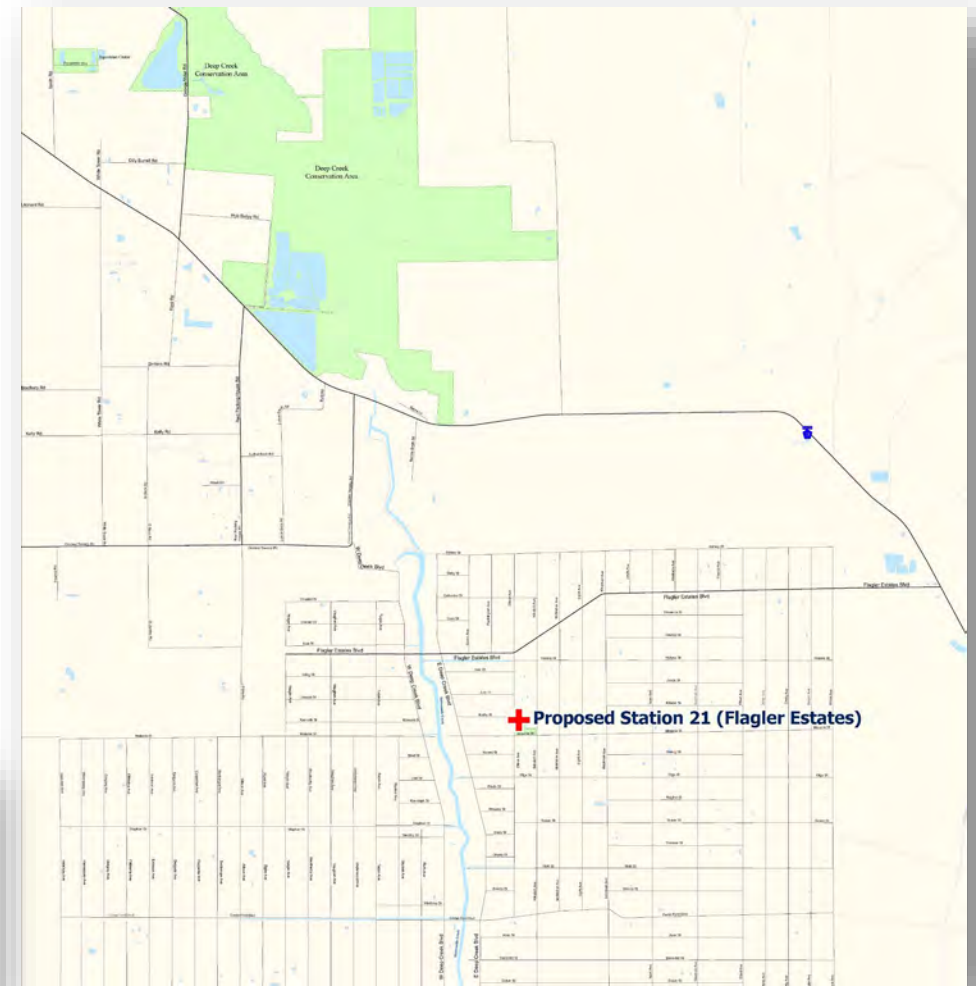
Improve Insurance Services Office (ISO) Rating



New Fire Station 21

Located in the Flagler Estates region to include:

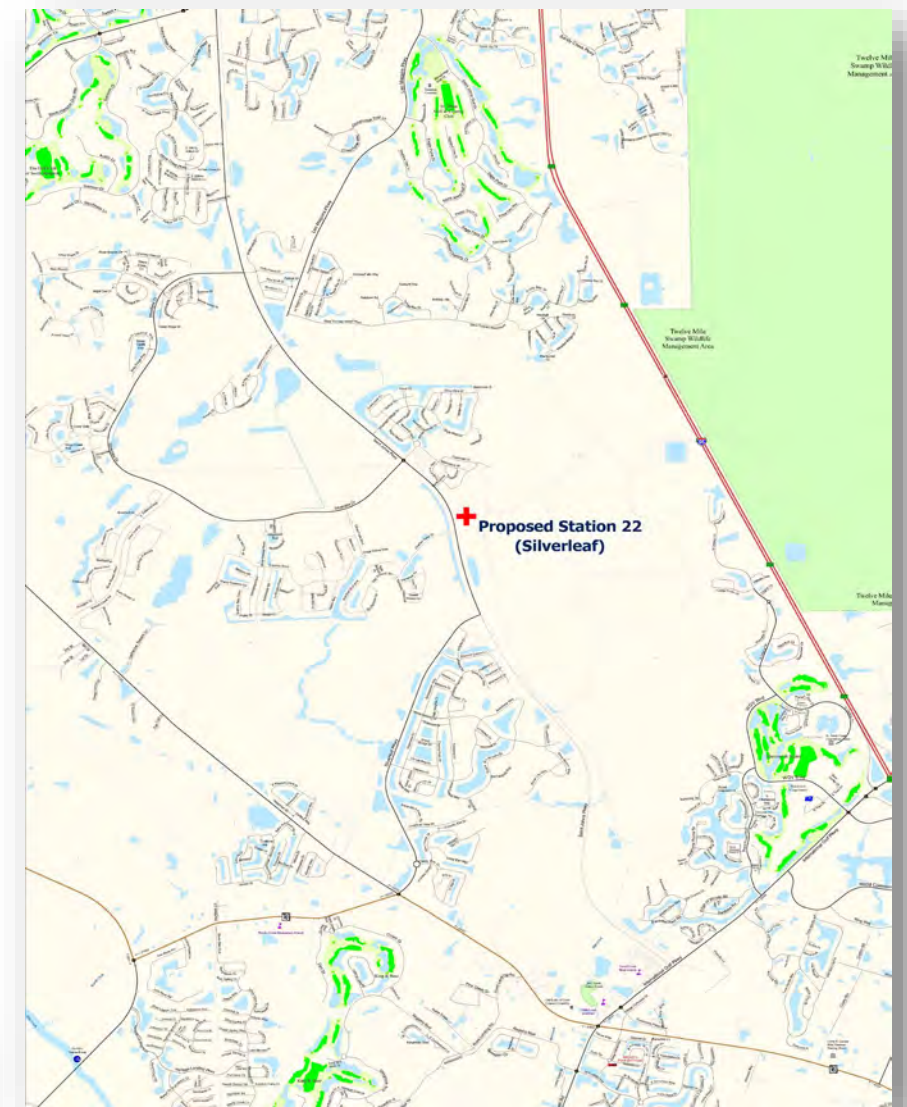
- ✓ 1 Advanced Life Support Engine, 1 Water Tanker
- ✓ Include Sheriff's Substation.
- ✓ Necessitates 12 additional firefighters
- ✓ County will pursue SAFER funding to offset initial personnel costs.
- ✓ **Estimated Completion: end of 2025**



New Fire Station 22

Located in Silverleaf region to include:

- ✓ 1 Advanced Life Support Engine
- ✓ 1 Aerial Apparatus, 1 Water Tanker, 1 Ambulance
- ✓ Sheriff Substation
- ✓ Future Combined Fire/SJSO Backup Communications Center
- ✓ Necessitates 33 additional firefighters
- ✓ Staff will pursue SAFER grants to offset initial personnel costs.
- ✓ **Estimated Completion: end of 2027**
- ✓ ***\$7.5 million in State Allocation***



New Fire Station 23

Located in Beachwalk/Twin Creeks region to include:

- ✓ 1 Advanced Life Support Engine, 1 Advanced Life Support Ladder, 1 Ambulance
- ✓ Sheriff Substation.
- ✓ Necessitates 30 additional firefighters
- ✓ County will pursue SAFER funding to offset initial personnel costs.
- ✓ **Estimated Completion: end of 2028**



New Fire Station 24

Located in Long-Leaf Pine / Roberts Rd. region to include:

- ✓ 1 Advanced Life Support Engine, 1 Ambulance
- ✓ Sheriff Substation.
- ✓ Necessitates 21 additional firefighters
- ✓ County will pursue SAFER funding to offset initial personnel costs.
- ✓ **Estimated Completion: end of 2030**



Sheriff's Headquarters Expansion

Sheriff's Headquarters:

- ✓ Centralized in the County at SR16 and I95.
- ✓ Relocated to the current training and 911 communications center site.
- ✓ Moved out of flood zone and active railroad; addresses current and future growth needs.
- ✓ **Estimated Completion: end of 2027**



New District 23 Medical Examiner Facility

Tri-County Medical Examiner Facility:

- ✓ Serving Flagler, Putnam, & St. Johns
- ✓ New facility equipped to serve combined populations
- ✓ Relocate out of flood zone
- ✓ Shared operating costs with Flagler & Putnam
- ✓ **Estimated Completion: end of 2027**
- ✓ ***\$11.7 million in State Allocation***



Open Governance & Transparency



New Budget Process

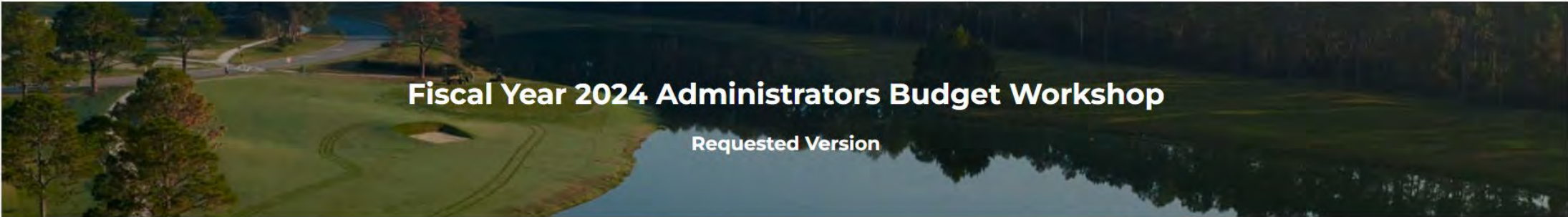


Budget Dashboard



St. Johns County

powered by ClearGov



Fiscal Year 2024 Administrators Budget Workshop

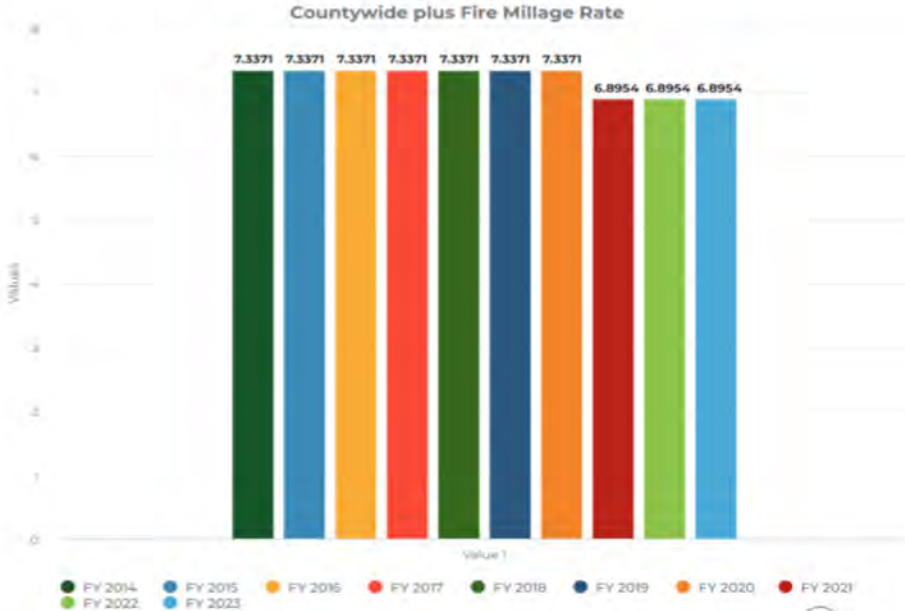
Requested Version

[A Note To Our Readers](#) [County Budget Summary](#) [The Budget by Service Area](#)

Print

Countywide plus Fire Millage Rate Graph

Rate charged for every \$1,000 of taxable property.



SJC Citizens Academy



Design a roadmap for the future

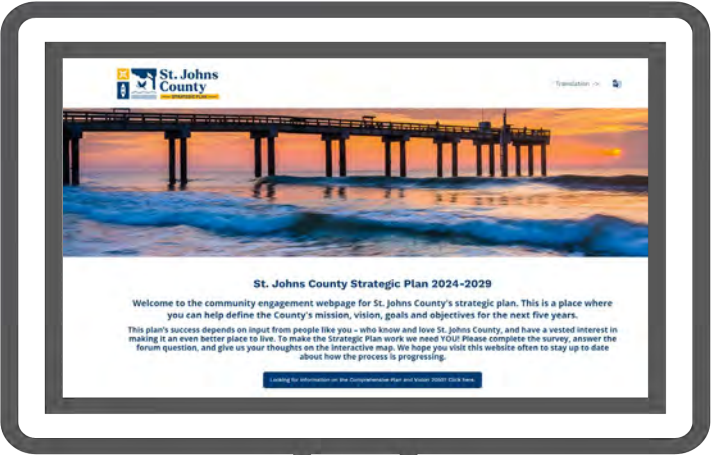
			
planning type	Strategic	Comprehensive	Economic development
purpose	Assesses where an enterprise- or department-wide organization is now, sets a vision for where it wants to go, and defines how it will get there	A document designed to guide the future actions of a jurisdiction. It presents a vision for a community's future with long range goals, objectives, and policies	Creates a vision and road map to proactively guide growth and development through actionable policies and strategies
focus(es)	Organizational direction Resource alignment Collective impact and stewardship in decision-making, policies, plans, programs, and policies	Land use and zoning Population growth Housing Transportation/Mobility Economic development Environmental stewardship	Population fluctuations Job creation and retention Market stability Partnership and investment Workforce attraction and retention
lifespan	3 – 5 years	10 – 20 years	3 – 5 years



Ongoing Input Opportunities



#YourGovernment



www.sjcfl.us/sjc-strategic-plan



COMPREHENSIVE
PLAN UPDATE
#YourCounty

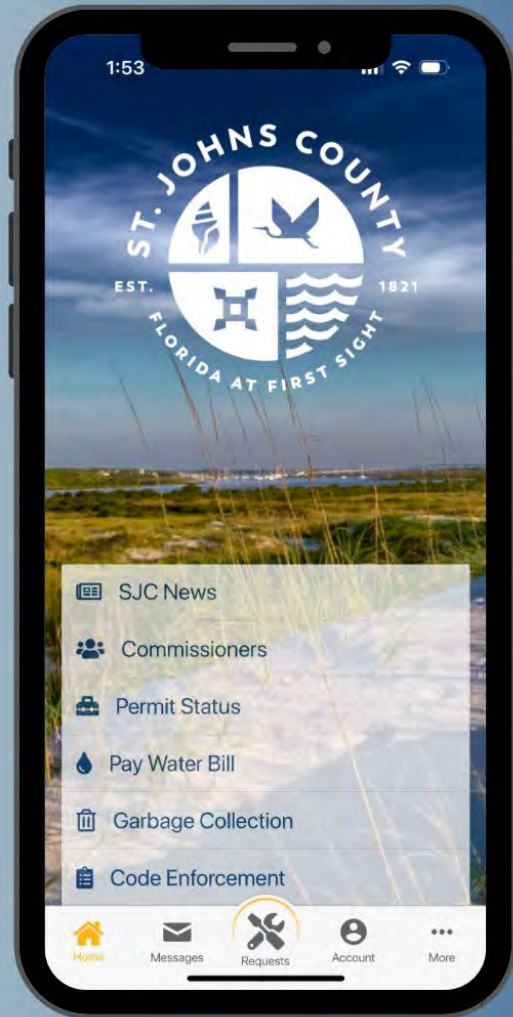


SJCPlanUpdate.com



SJC CONNECT APP

Report Public Property Issues, Private Property Complaints, & more!



SCAN ME

GET IT ON



Google Play



Download on the
App Store

Quality Education



2023 Florida Assessment of Student Thinking (FAST), End-of-Course (EOC), and Statewide Science Assessment St. Johns County School District State Rankings:

#1 in state in Reading: 3rd, 4th, 6th, 7th, 8th, 9th, and 10th grades;

- Second in state in Reading: 5th grade

#1 in state in Math: 3rd grade, 4th grade (tied), and 8th grade;

- Second in state in Math: 5th and 6th grades;
- Eighth in state in Math: 7th grade (tied)

#1 in state in Science: 5th and 8th grade

#1 in state in EOC exams: Algebra 1, Biology 1, Civics, and US History;

- Third in the state in EOC exams: Geometry (tied)



An aerial photograph of a city featuring a large, multi-story white building complex with red-tiled roofs in the foreground. A large, dark blue lake is situated in the middle ground, surrounded by greenery and palm trees. In the background, there are various commercial buildings, parking lots filled with cars, and a highway. The text "Economic Resiliency" is overlaid in large white font on the left side of the image, with a thin orange horizontal line below it.

Economic Resiliency

UF Health Durbin Park

2901-3105 new jobs
150 Beds
\$1 Billion in NE FL



Publix Central Pharmaceutical Facility

400 New Jobs

\$29 million Building

\$88 million high-tech robotic equip



345 jobs retained
100 new jobs
\$85.5 million investment



The Amp

\$35.4 Million Economic Impact
77 Concerts
#1 in US / #2 Worldwide in Pollstar Mag



88 Concerts

\$5.1 million Economic Impact

Ponte Vedra Concert Hall



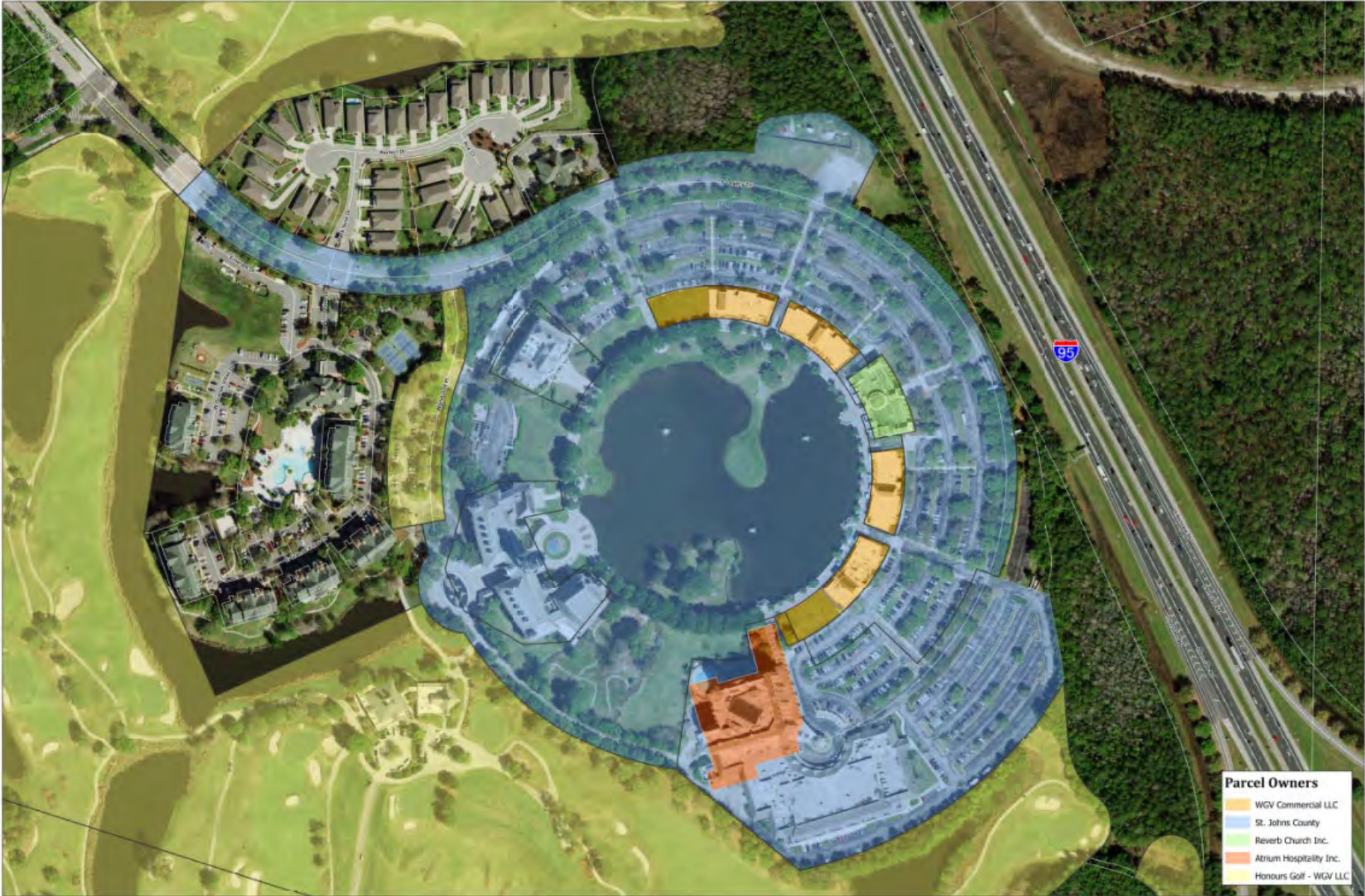
Rendering of Ponte Vedra Concert Hall Renovation

PONTE★VEDRA
CONCERT HALL



FISHER | KOPPENHAFFER
ARCHITECTURE + INTERIOR DESIGN

World Golf Village Acquisition



World Golf Village Acquisition

Purchase price is \$5,500,000

- **Real Property: \$5,297,500**
- **Inventory and Marks: \$ 202,500**



Florida Museum of Black History



The Team





Brad Bradley
Deputy CA



Colin Groff
Deputy CA



Ryan Kane
Parks and Recreation



Jesse Dunn
OMB



Joseph Giammanco
Emergency Management



Angie Cowling
Chief of Staff



Neal Shinkre
Utility Director



Sarah Taylor
Chief Performance
Officer



Greg Caldwell
Public Works



Wayne Larson
Public Affairs





Sean McGee

Fire Chief



Tera Meeks

Tourism Development



Joseph McDermott

Veteran's Services



Jaime Locklear

Purchasing



Wendolyn Sneed

Medical Examiner



Corey Bowen

Land Management



Mike Roberson

Growth Management



Debra Gibson

Library System



Shawna Novak

HHS





Adam Tecler

Intergovernmental Affairs



Daniel Whitcraft

Facilities Management



Ann Ashworth

Human Resources



Laura Dodd

Risk Management



Thank you

SJC



SCAN ME